

Educational Master Plan Data Presentation

by

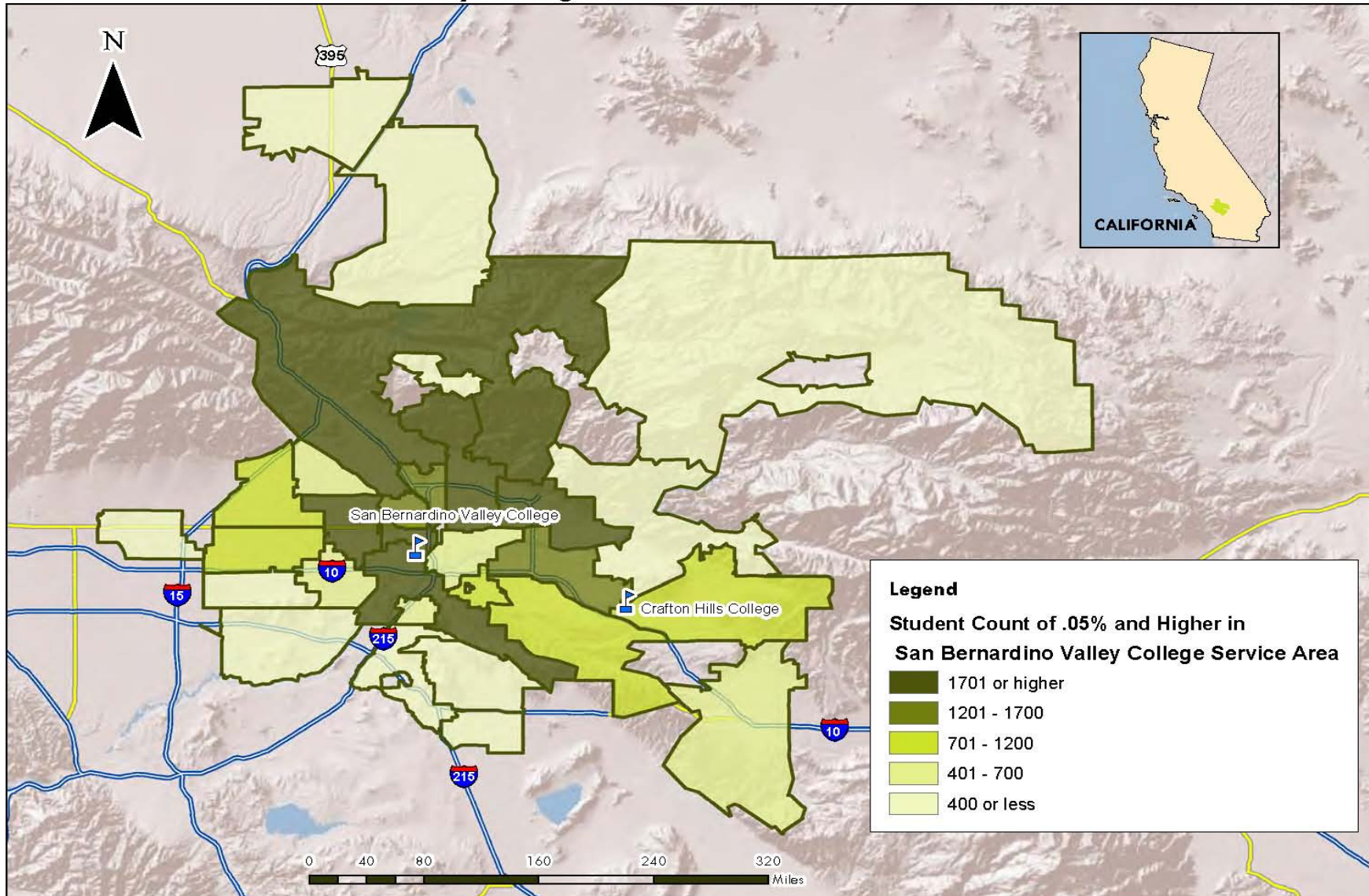
Office of Research and Planning

January 8, 2010

SBVC Students

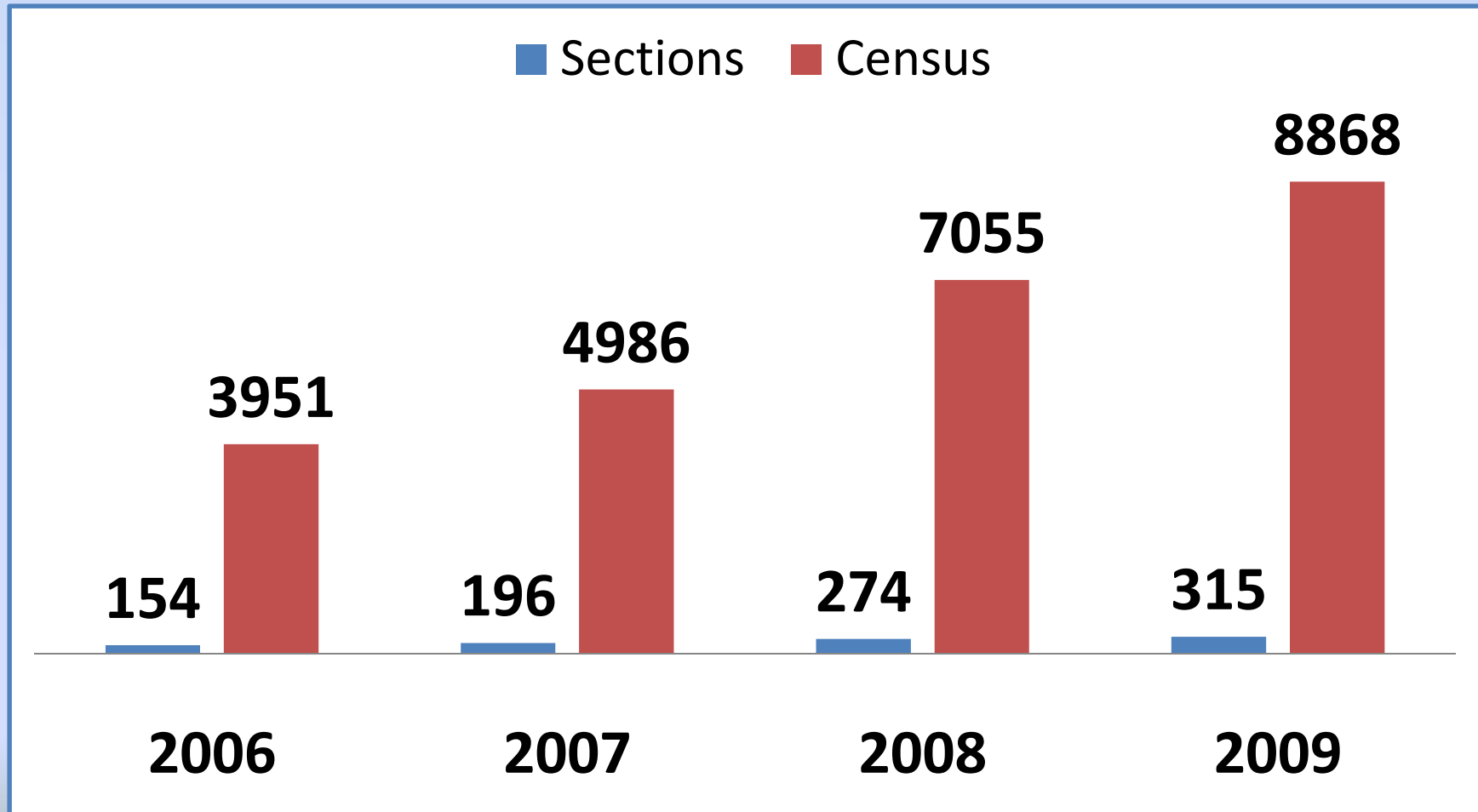
Where Do Our Students Live?

San Bernardino Valley College Service Area: Distribution of Student Enrollment



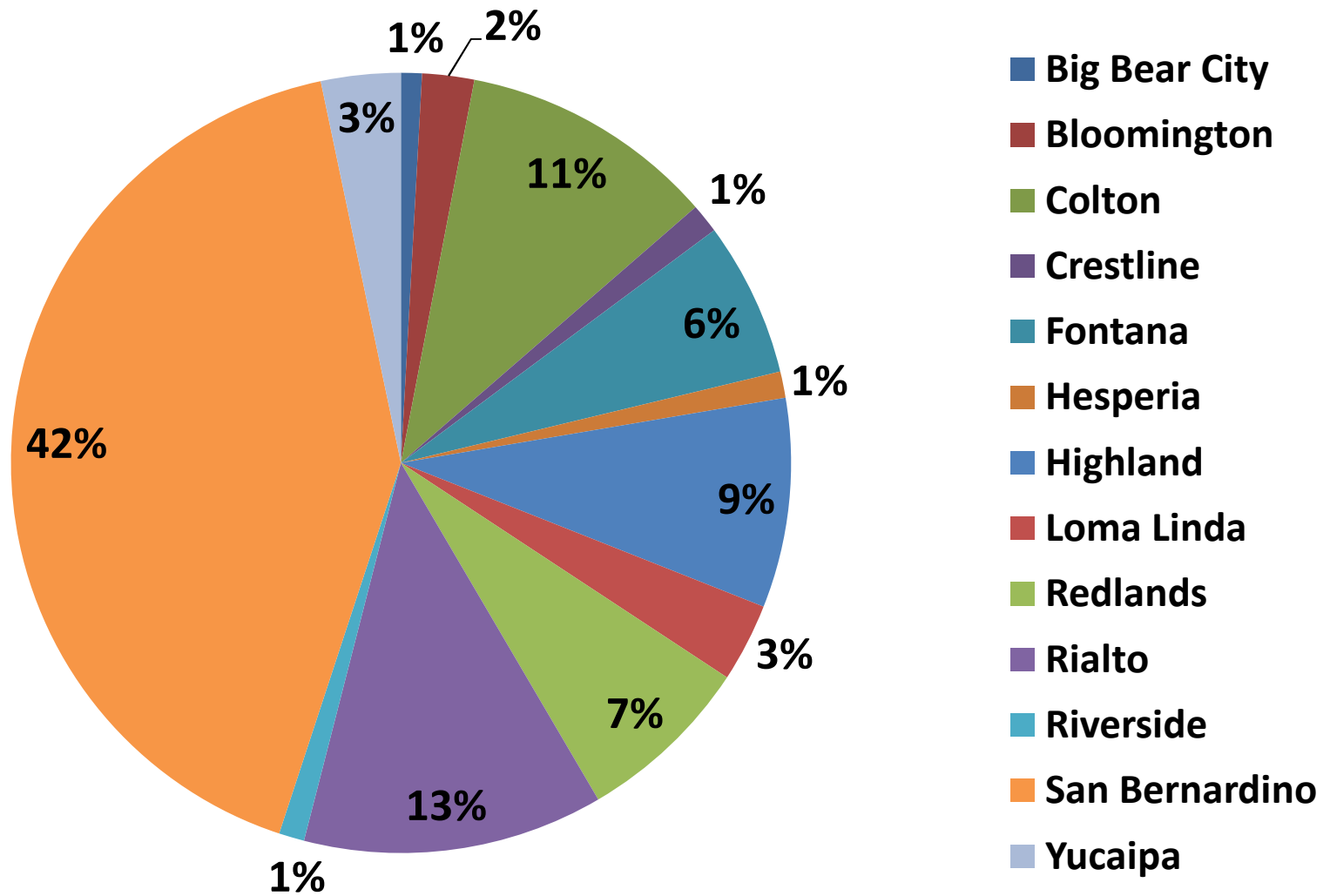
Source: Center of Excellence, California Community College. Software and data provided by ESRI

Non-Traditional Delivery

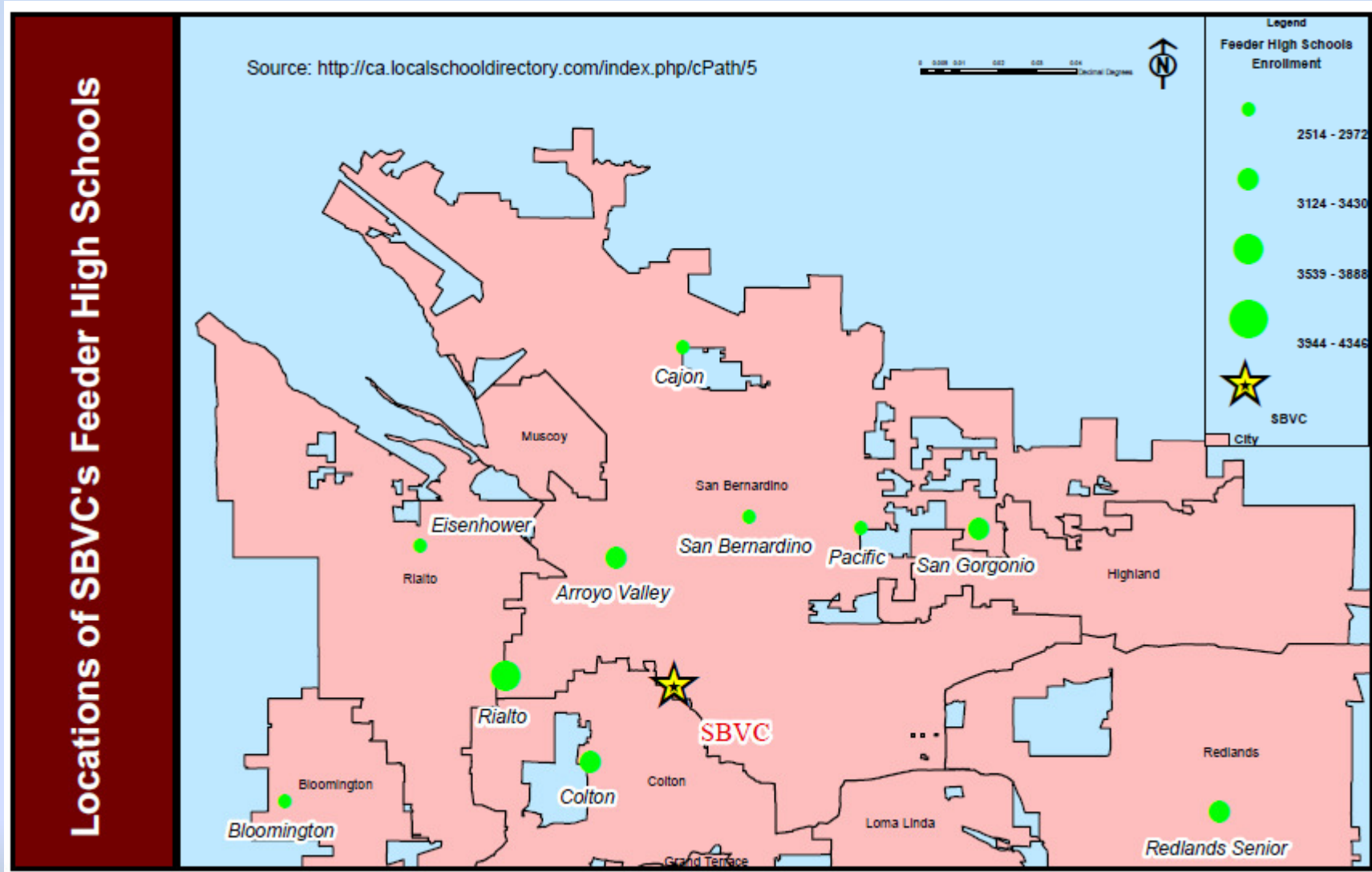


San Bernardino Valley College Distribution of Enrollment

Student count by city 2006-2007 - 2008-2009



SBVCs Feeder High Schools Map



Locations of SBVC's Feeder High Schools

Breakdown

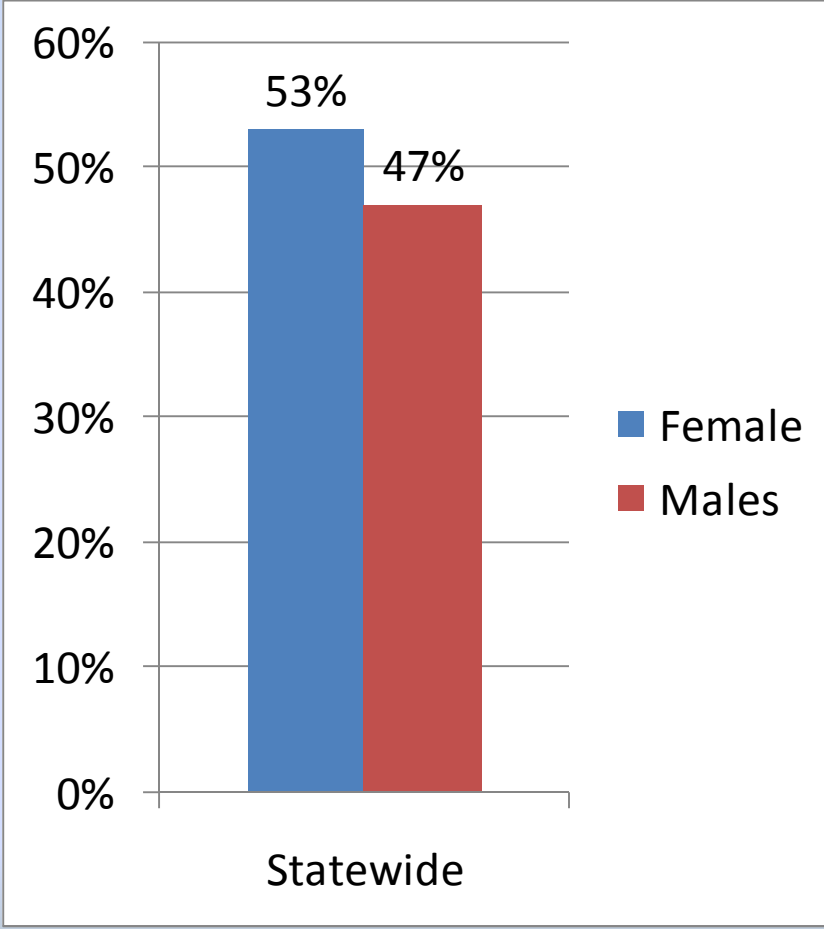
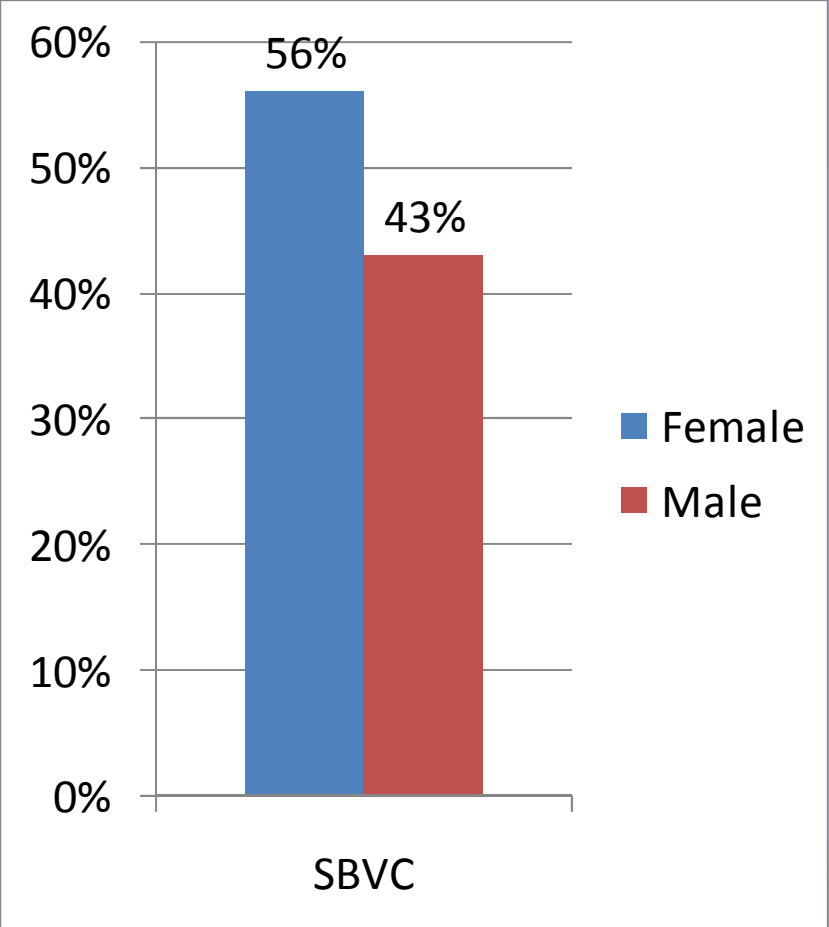
- Each year approximately 20% of the students come directly from high school
 - Over 10% of the 18 and 19 age group do not have HS degrees—some of them have dropped out of high school; some have failed the CAHSEE.
- Of those between the ages of 20 and 40
 - 18% are new; 26 % are returning—many of them after significant periods of absence from school and employment.

SBVC – State Comparison

- How are we similar to the state?
 - Gender breakdown (same as state average)
 - Part-time/full-time breakdown (higher PT than state average)
 - Diversity of student population*
 - Unemployment rate*
 - Concurrent enrollment programs and Middle High School College Program*
 - Occupation/Technical training*
 - Students in need of basic skills (slightly higher than state average)

***Higher than state average.**

Gender: SBVC & The State 2009

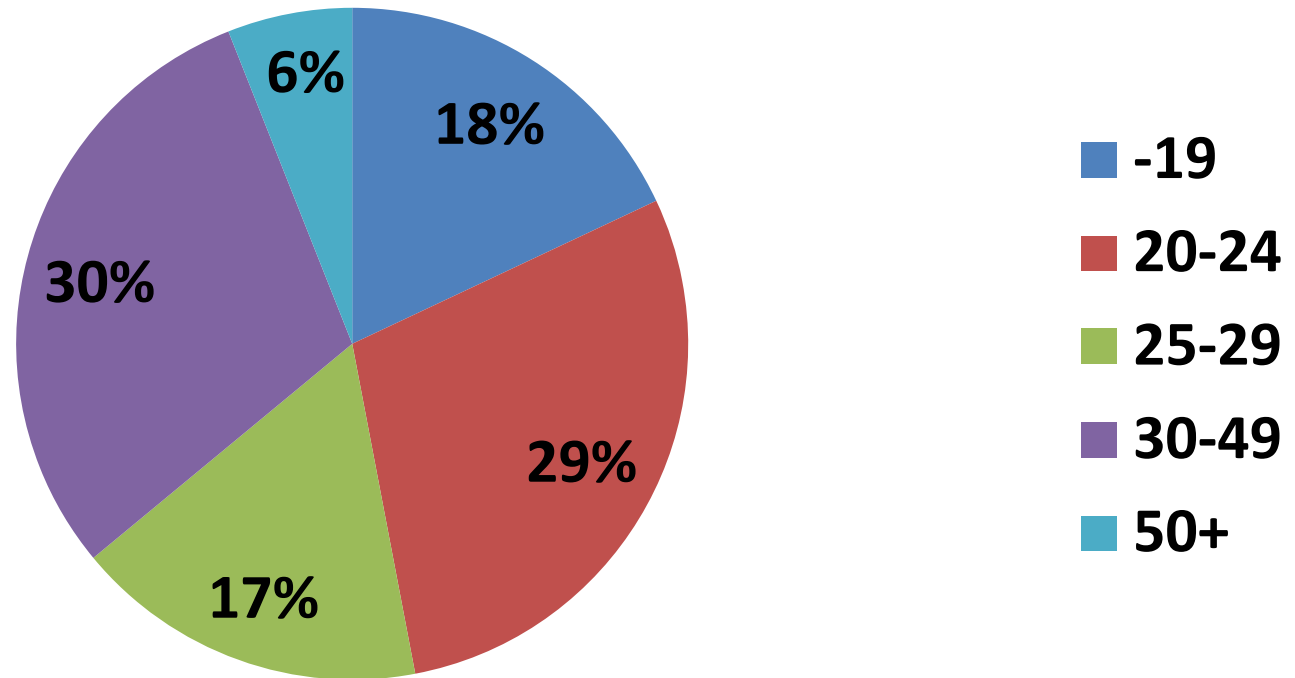


Part-Time Enrollment

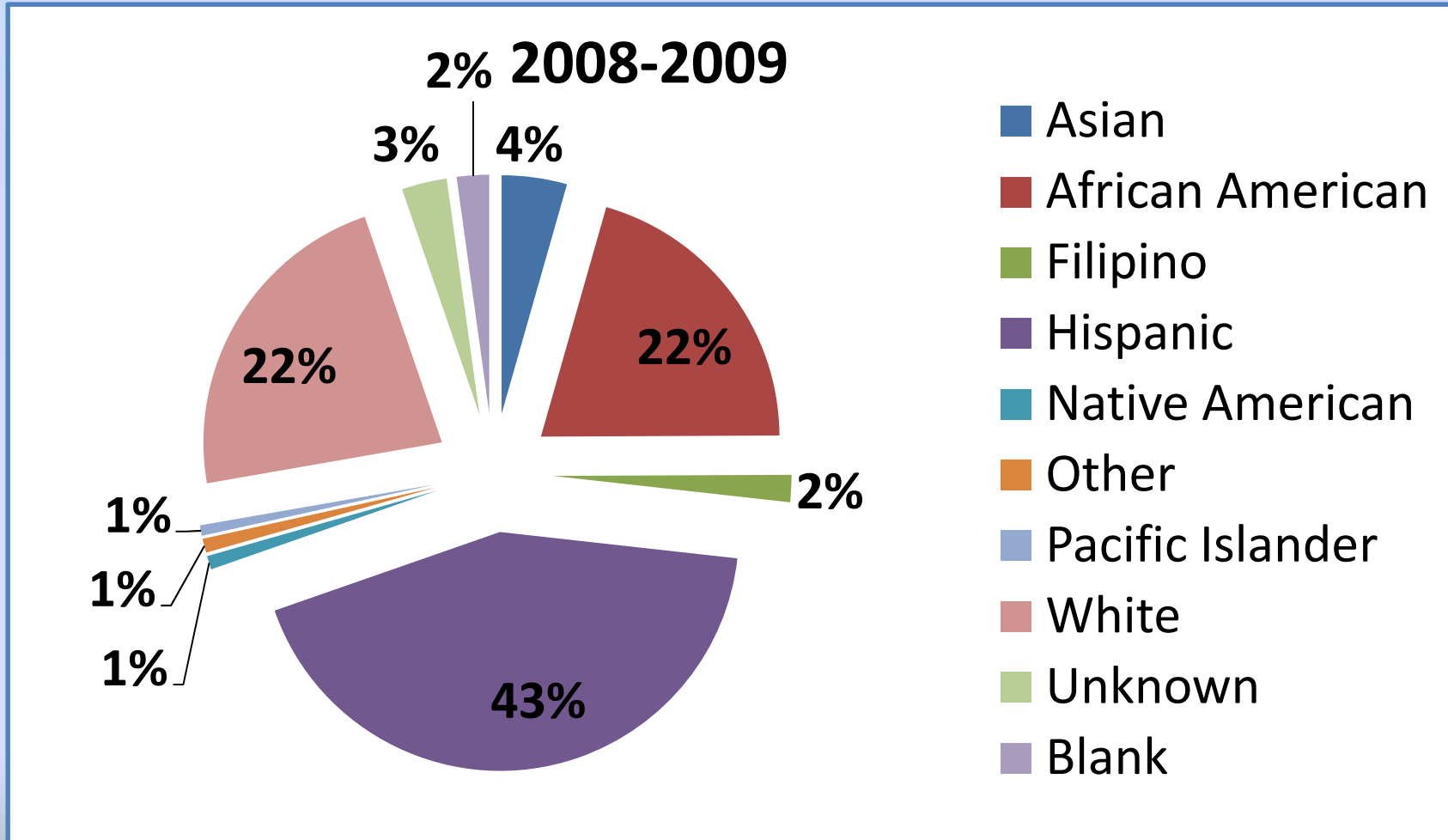
- Approximately 80% of SBVC students enroll in less than 12 units in a typical term.
- Over 40% of SBVC students enroll in 6 units or less.

SBVC Age Distribution

2008-2009



SBVC Ethnicity

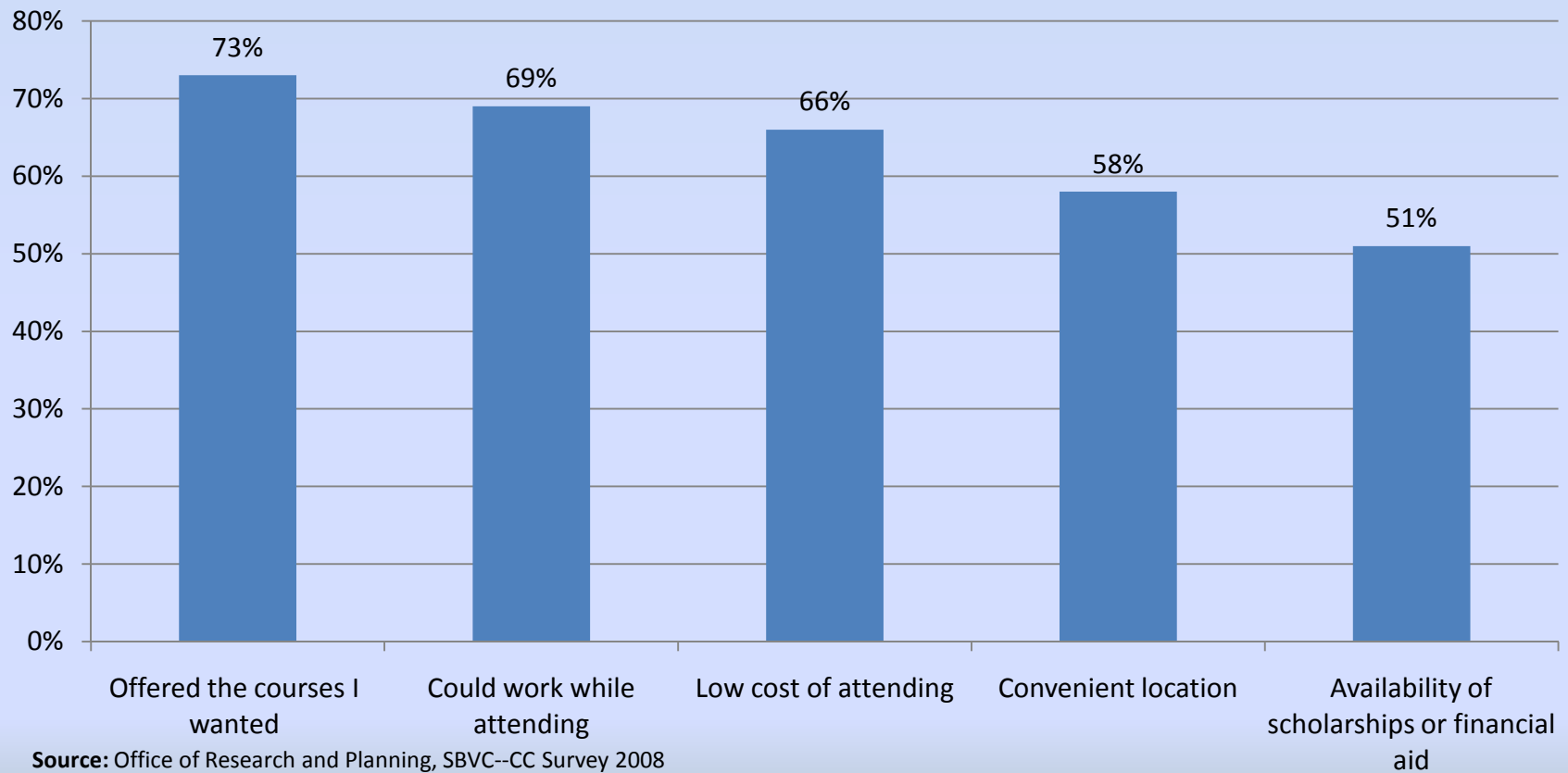


Day/Evening Course Count

- SBVC offers over 400 evening or weekend courses in any typical Fall or Spring term (over 25% of the sections offered).

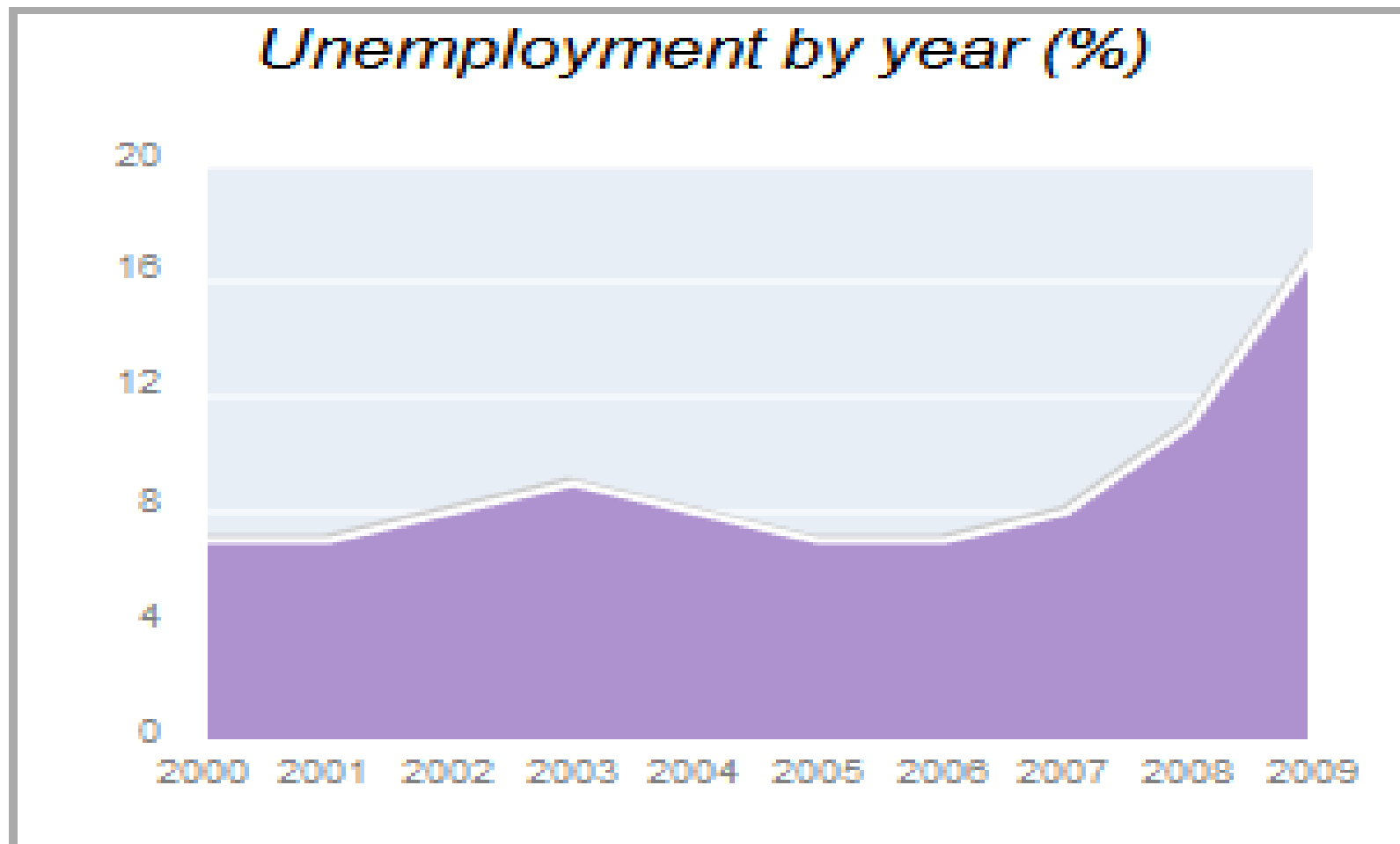
Campus Climate Survey 2008

Reasons for choosing Valley College



Employment Outlook

San Bernardino Unemployment



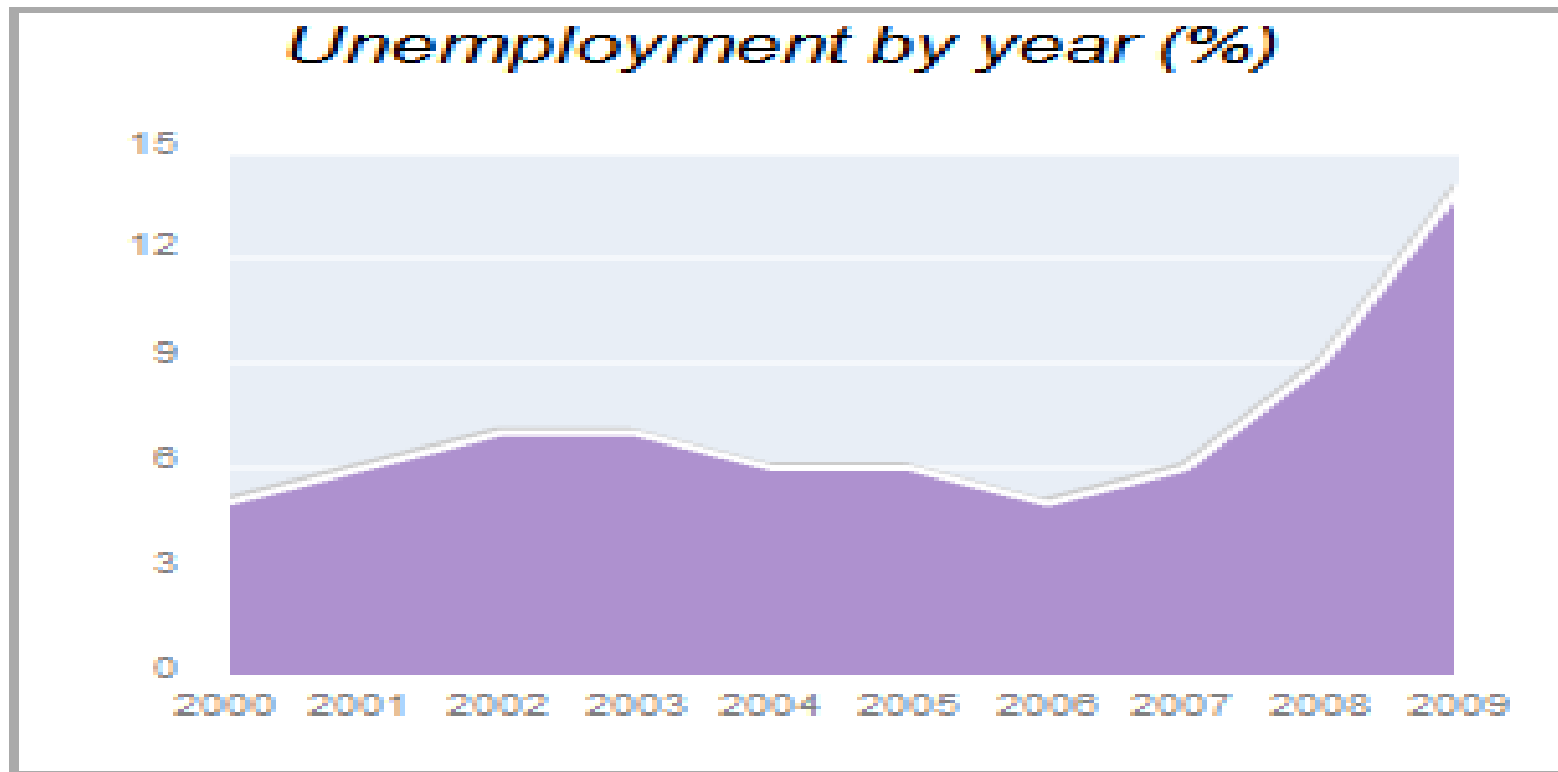
6/2009=17.4

Colton

Unemployment in May 2009:

Here:  13.9%

California:  11.2%

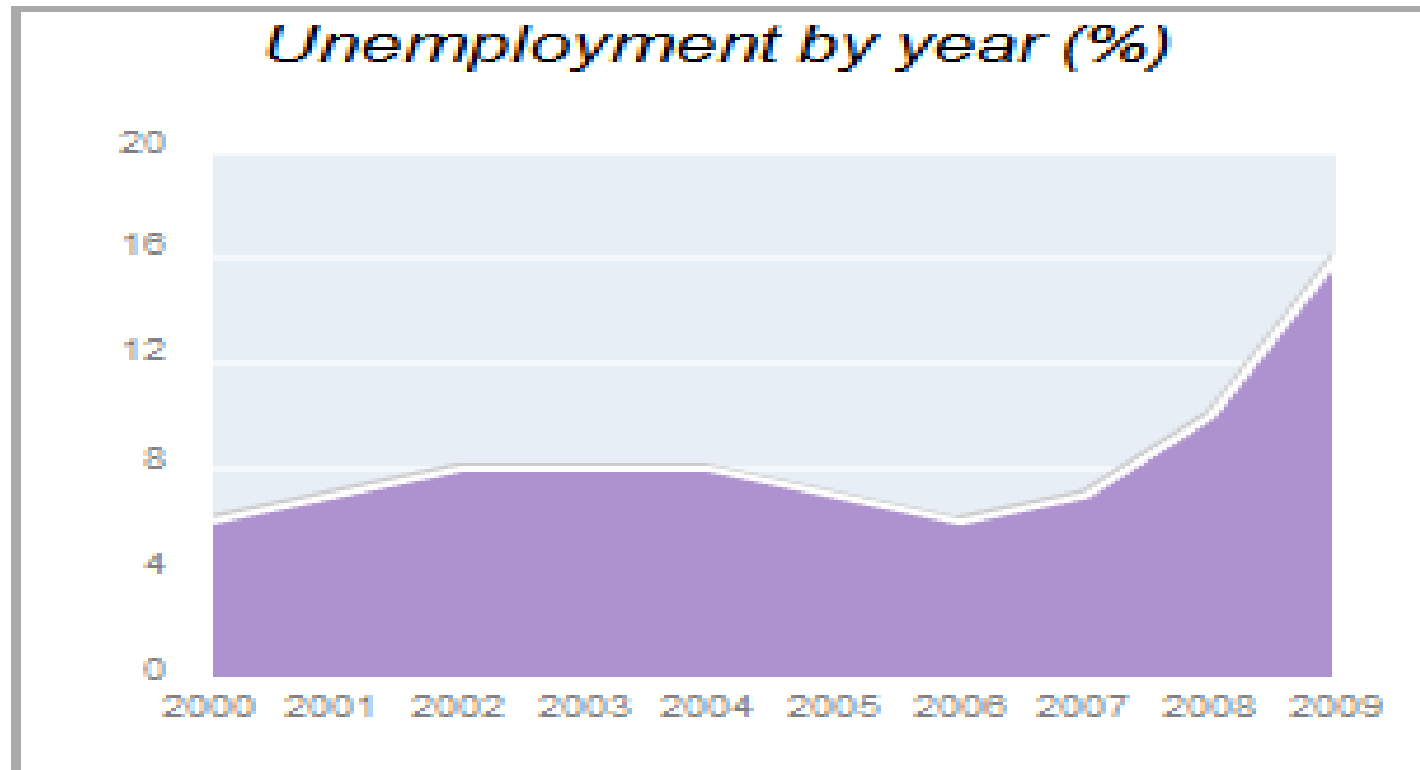


Rialto

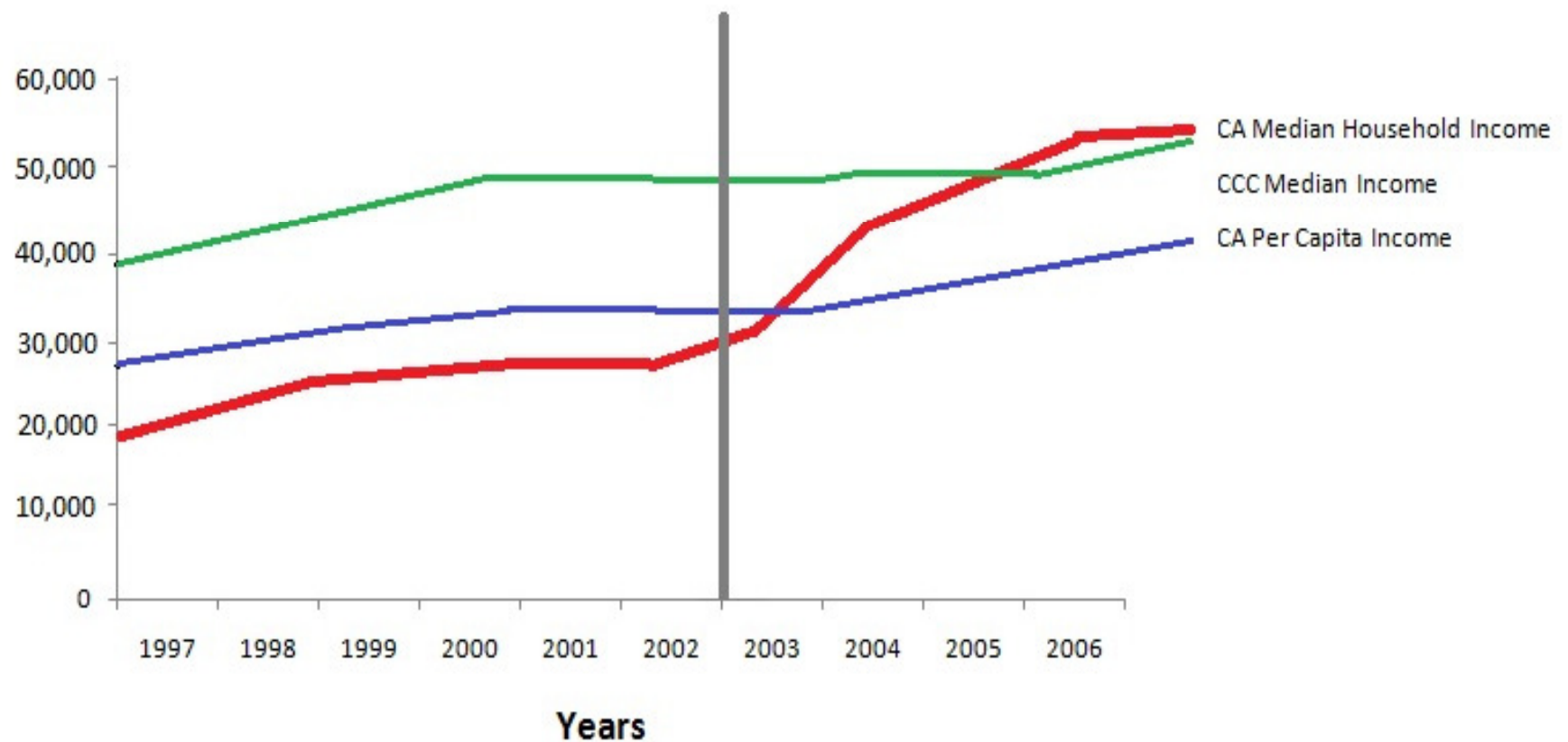
Unemployment in May 2009:

Here:  16.4%

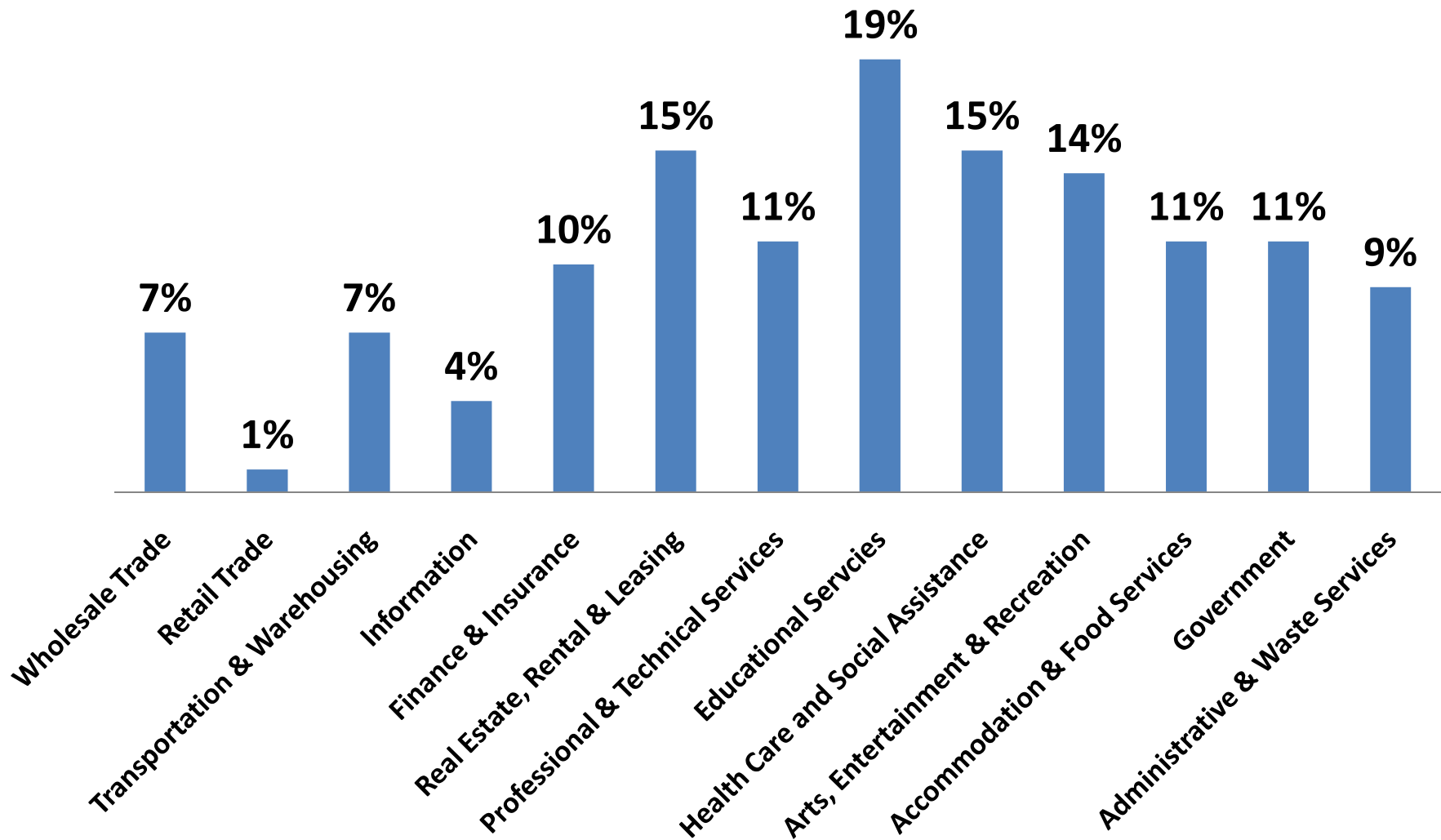
California:  11.2%



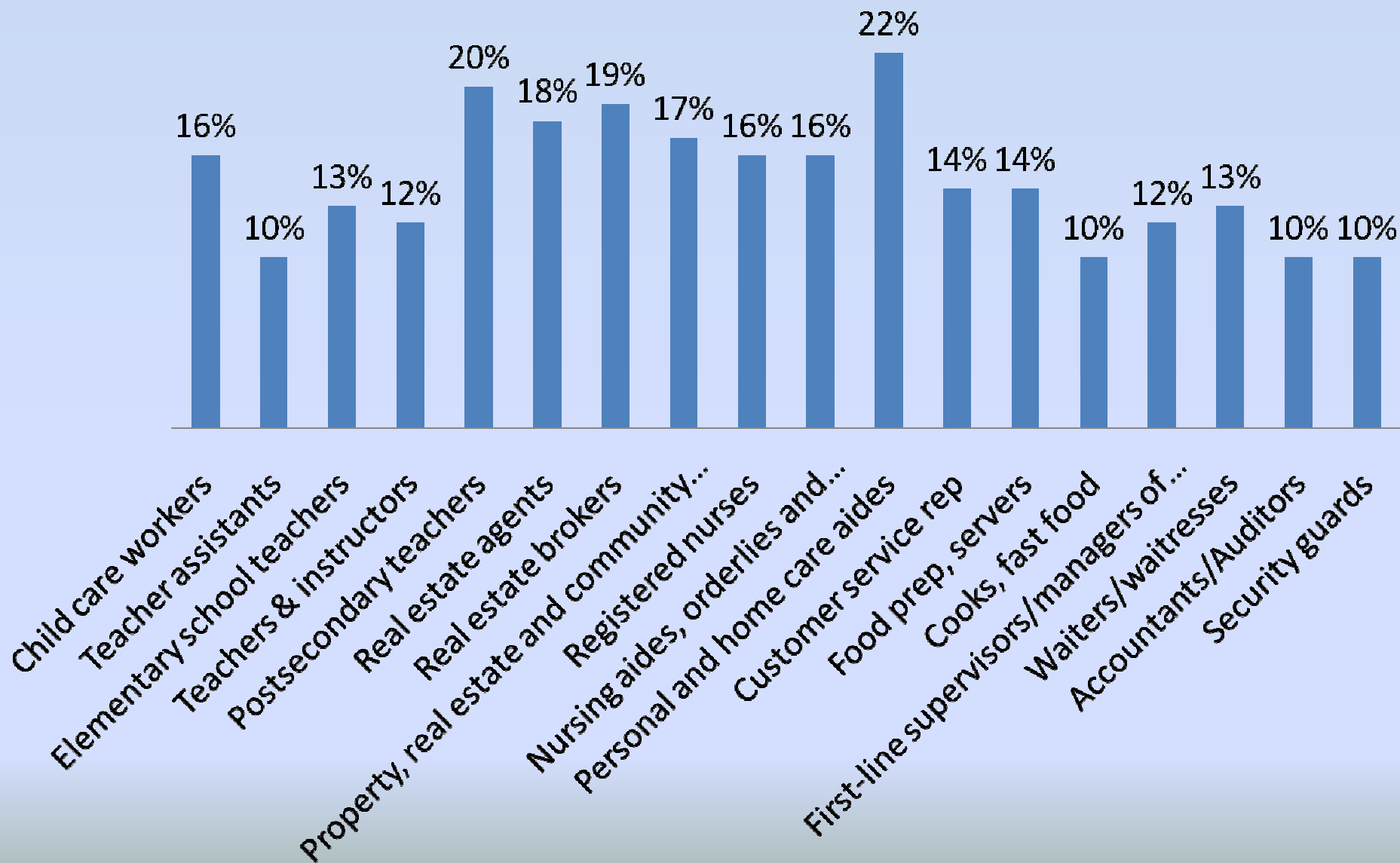
Income Change After An Award Associates Degree or Certificate



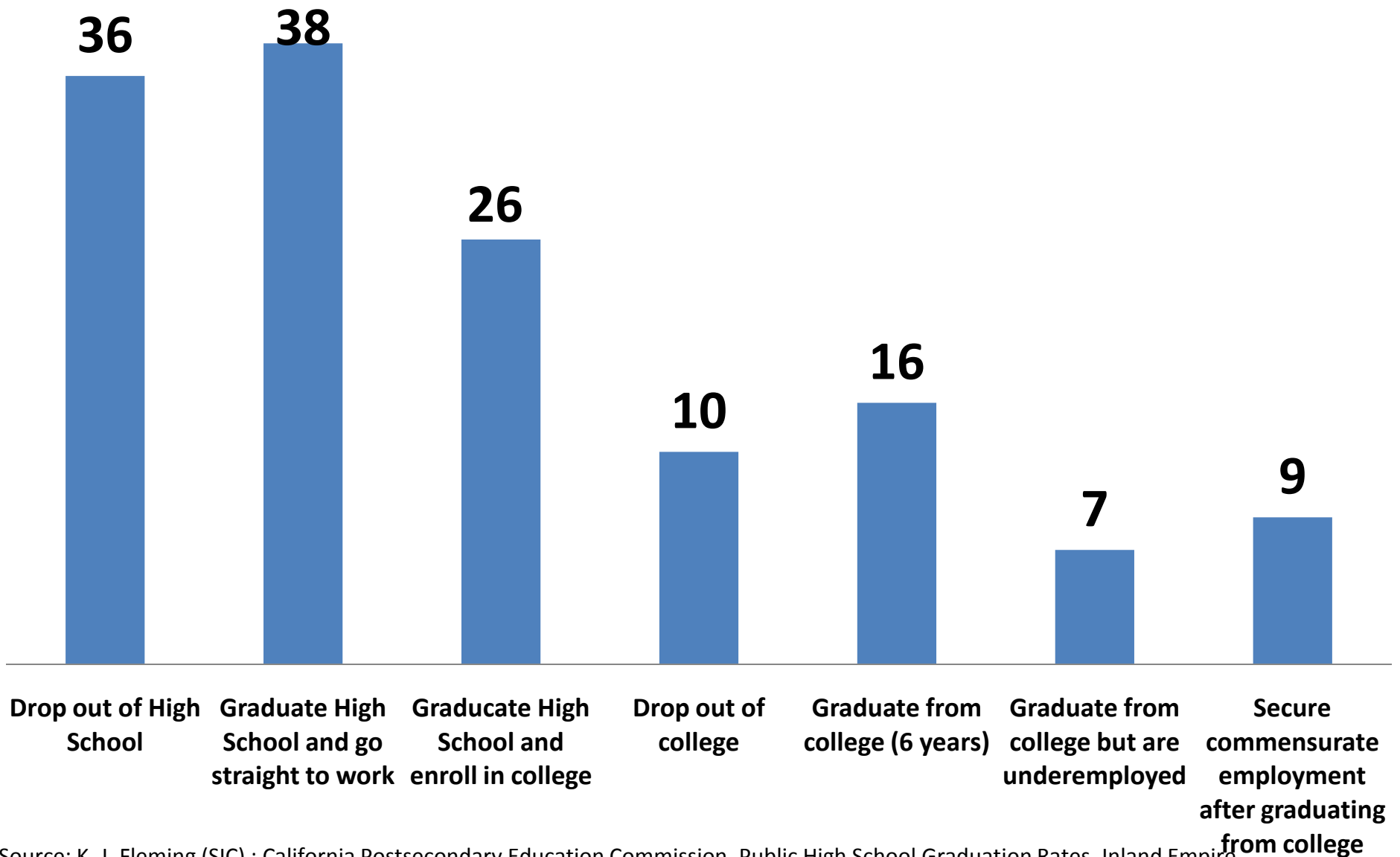
Job Projections by Industry 2008-2013



Occupational Projections 2008-2013



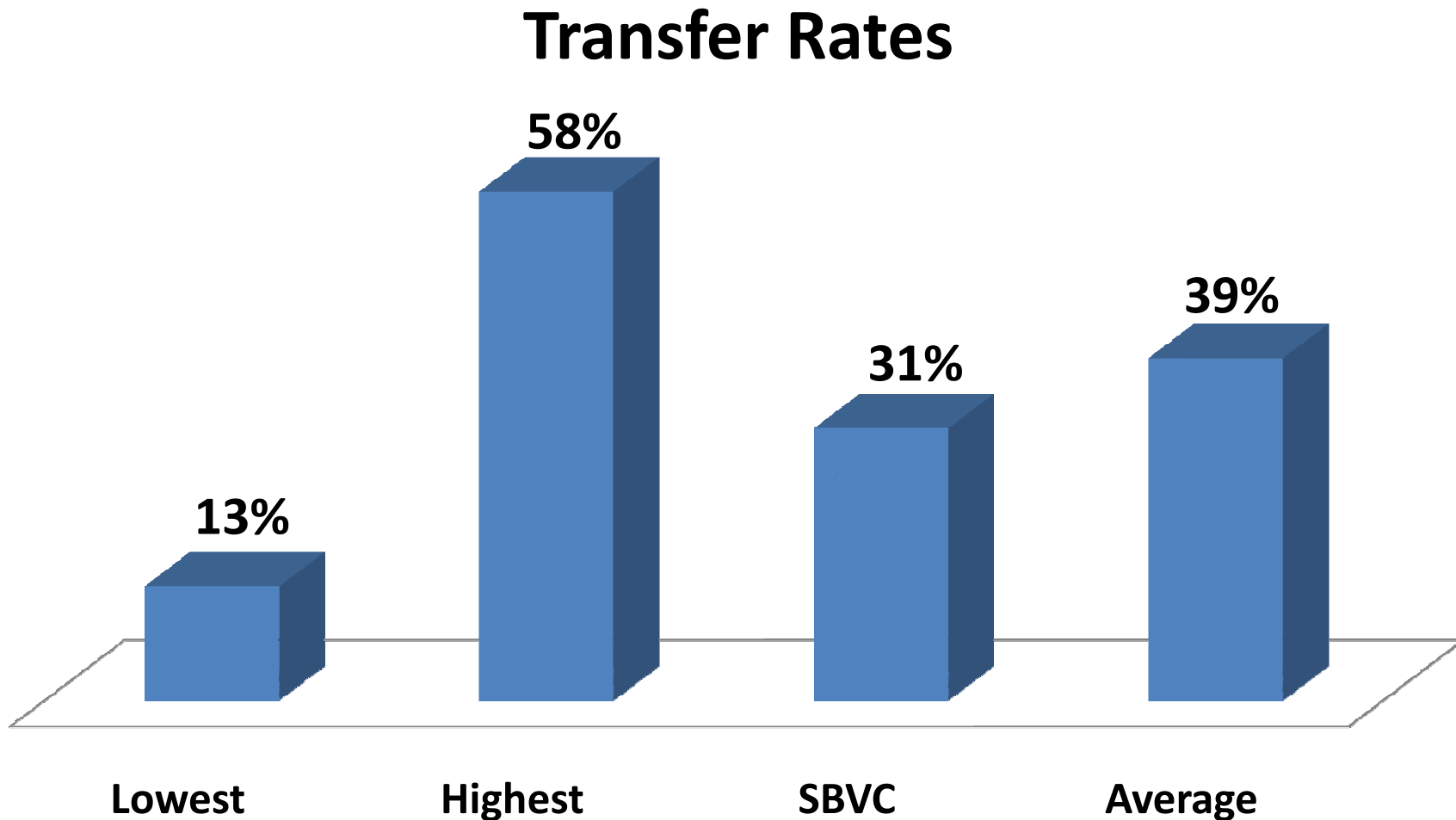
The Fate of 100 - 9th Graders In The IE



Source: K. J. Fleming (SIC) ; California Postsecondary Education Commission, Public High School Graduation Rates, Inland Empire

Transfer Rates By Colleges

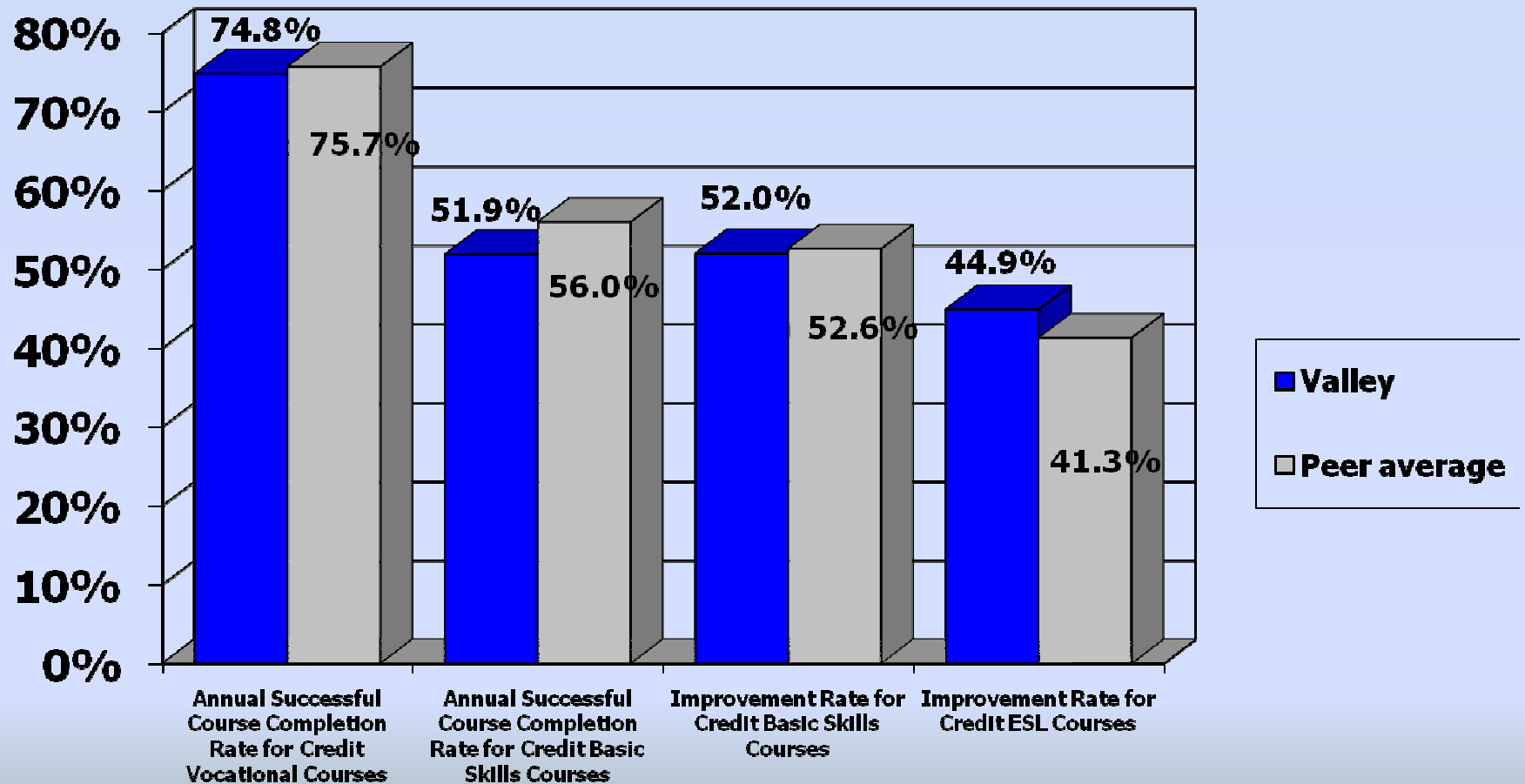
Transfer study conducted by California Community Colleges Chancellor's Office tracked transfer rates from 2000-2001 to 2005-2006.



Source: California Community Colleges Chancellor's Office Transfer Study 2000-2001 - 2005-2006

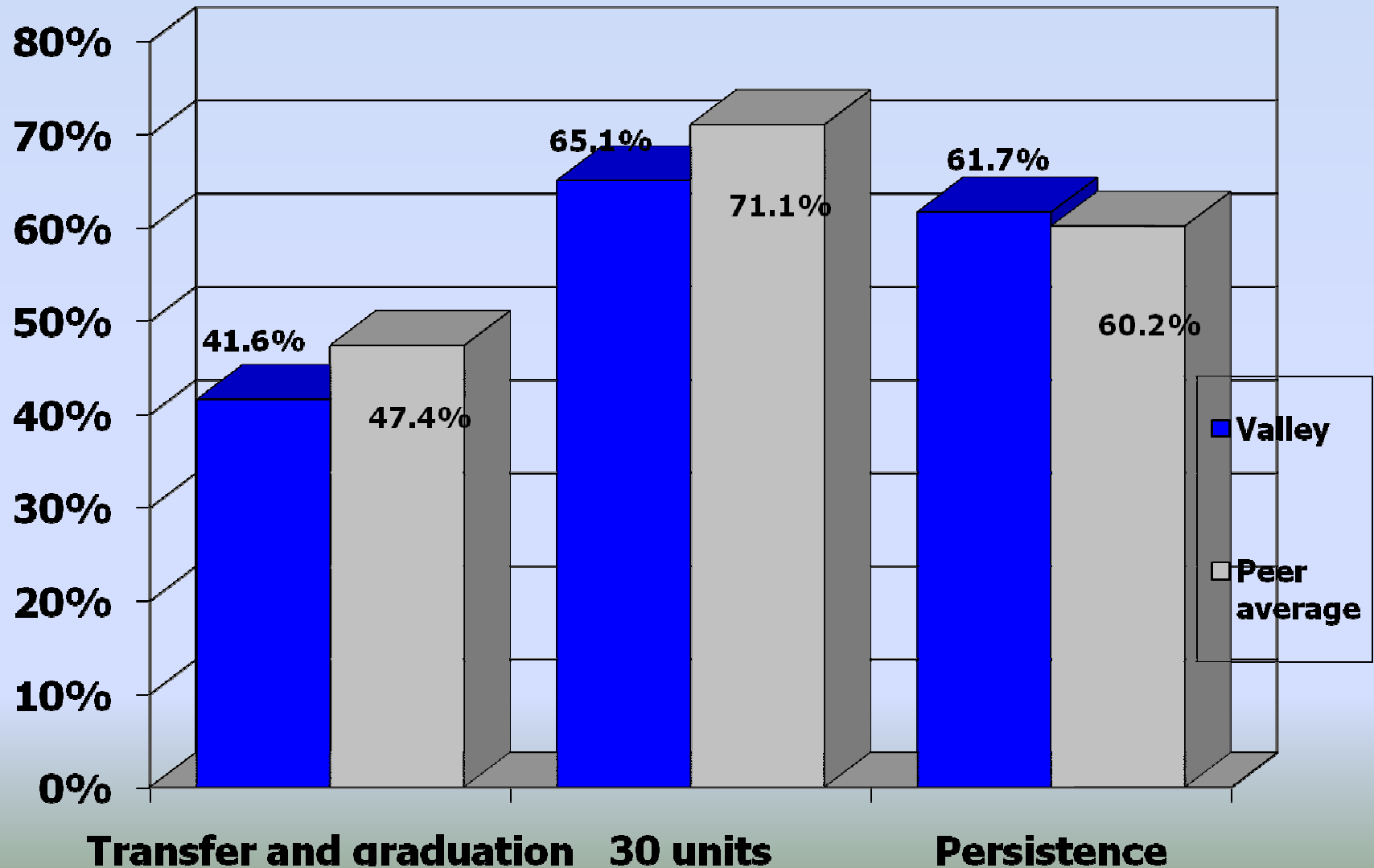
ARCC Peer Group Comparisons

Student Progress & Achievement



ARCC Peer Group Comparisons

Student Progress & Achievement



Additional Resources

- Professional Development Center, SBCCCD,
http://www.pdctraining.org/index.php?page=ES_reports.htm
- Office of Research and Planning,
<http://depts.valleycollege.edu/research/>

Questions?