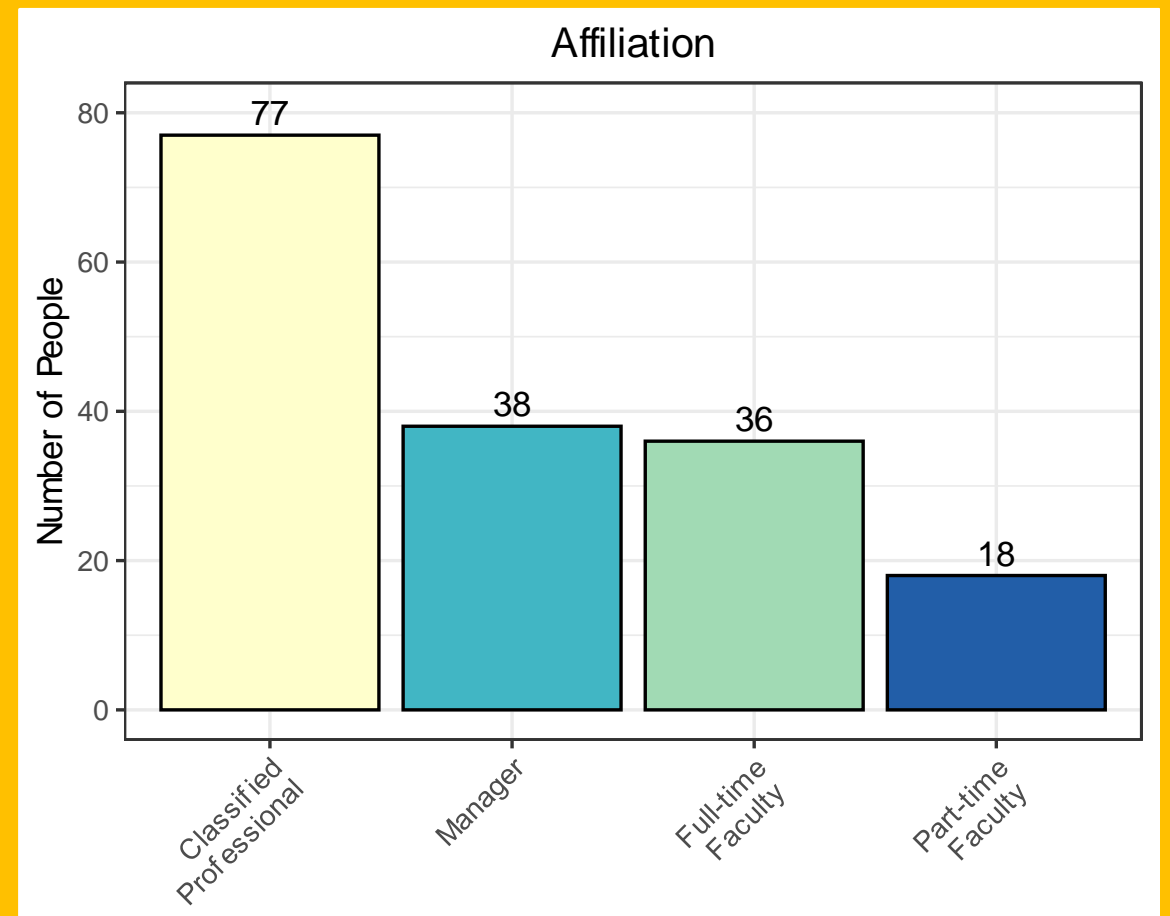
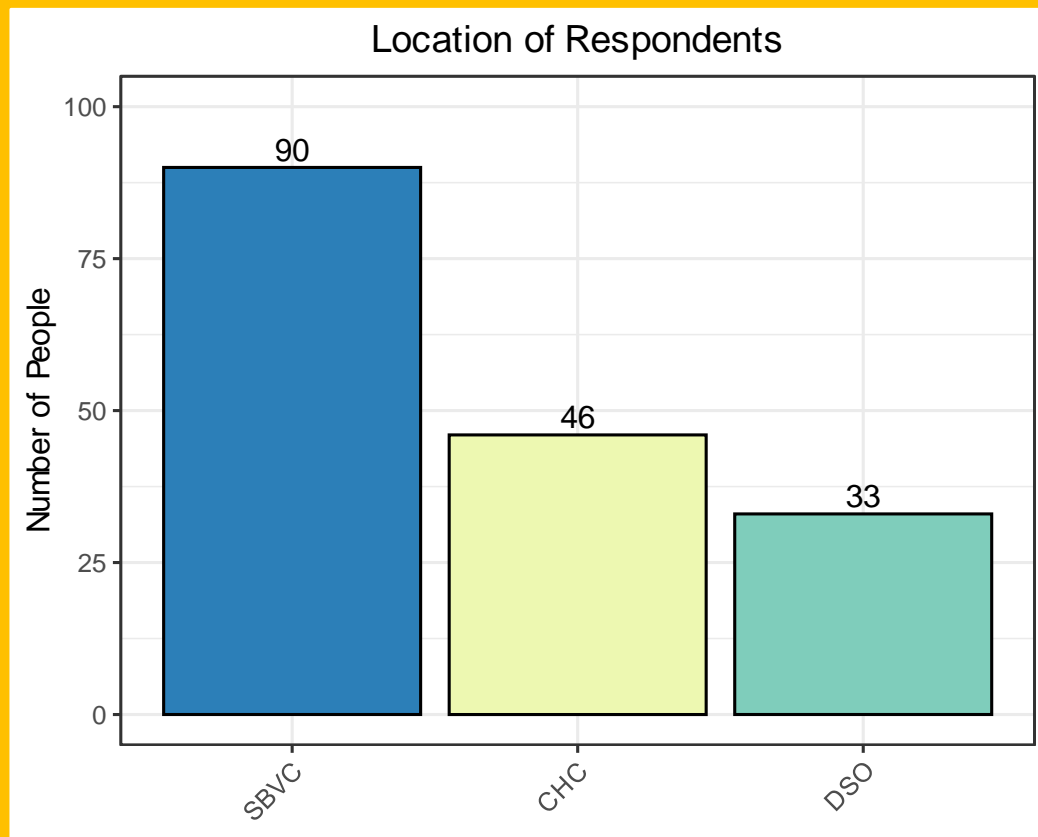


IEAC Data Accessibility Survey Results

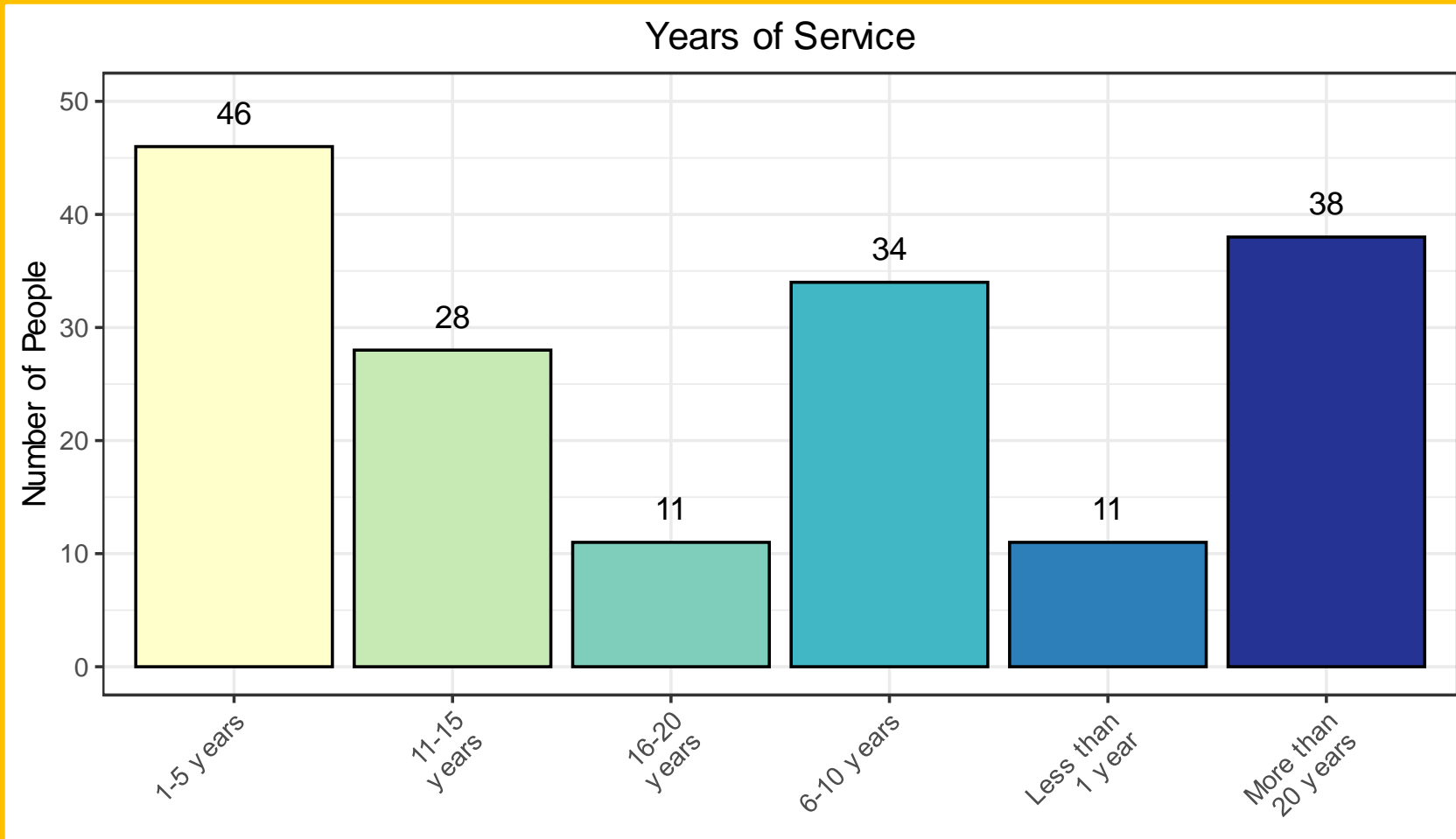
Fall 2022

Location of the Respondents

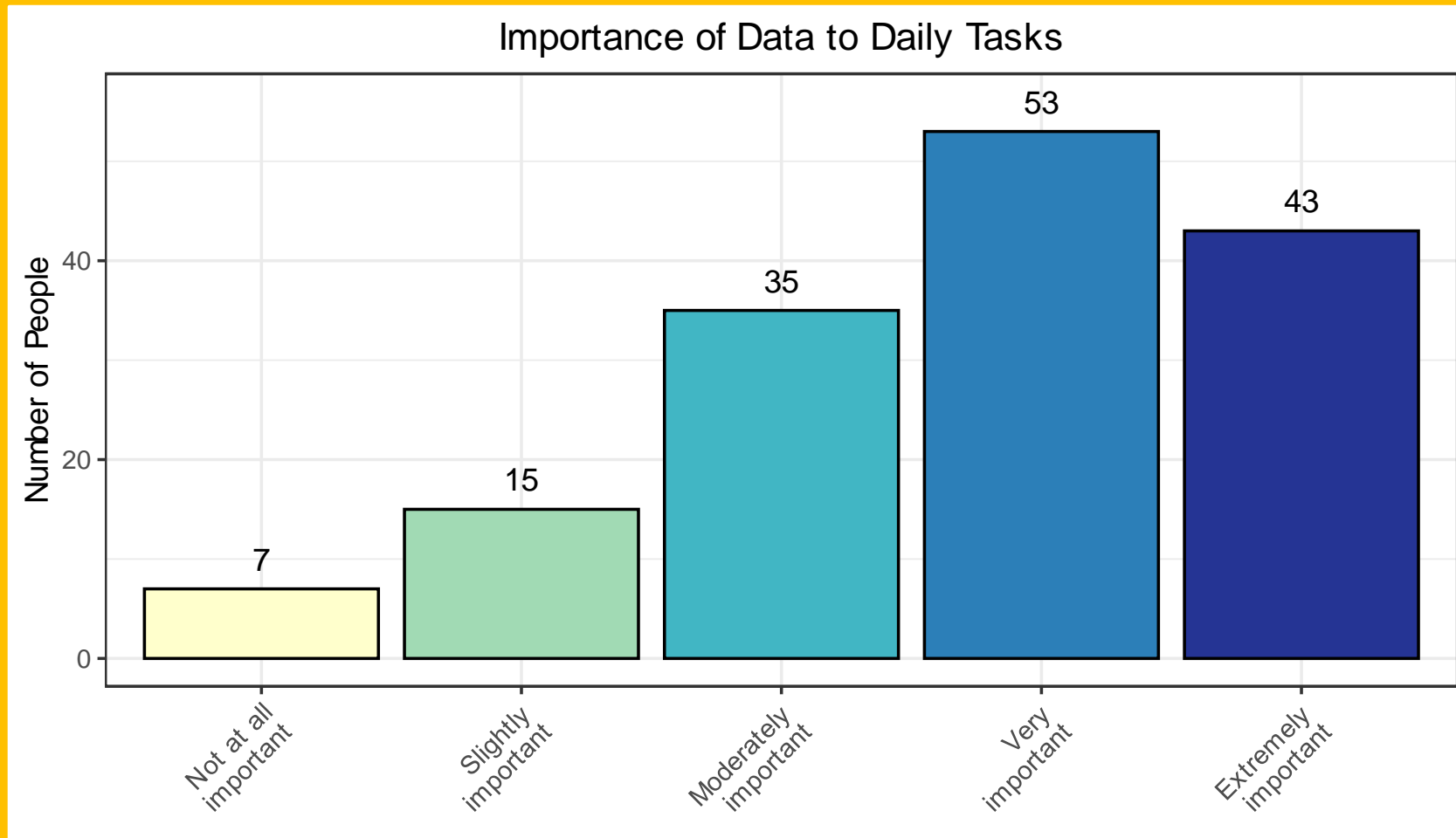
- Total: 173 responses



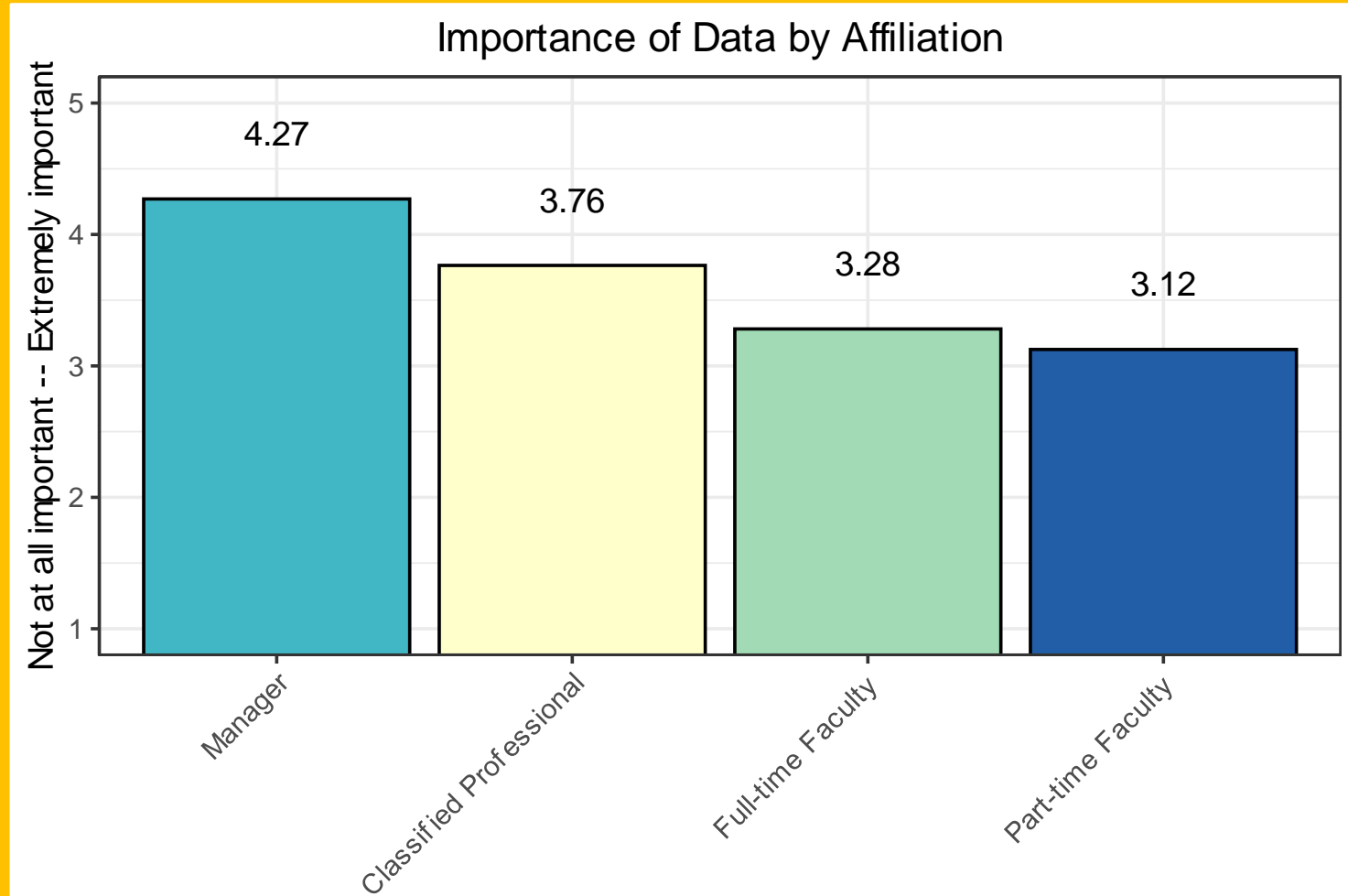
Respondents' time at SBCCD.



People tend to agree that data are important to their daily tasks.

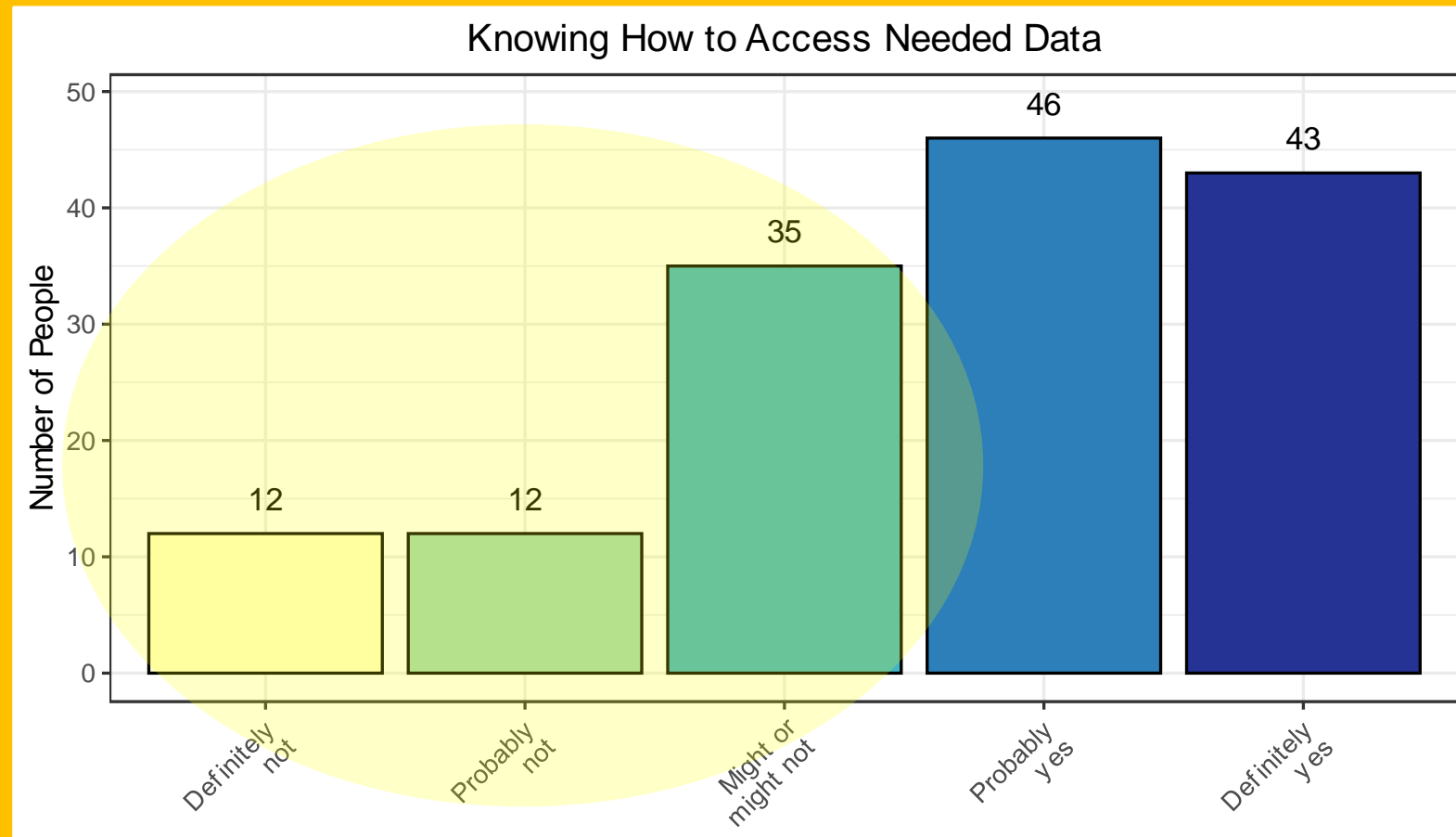


Managers report the importance of data more than other constituencies.

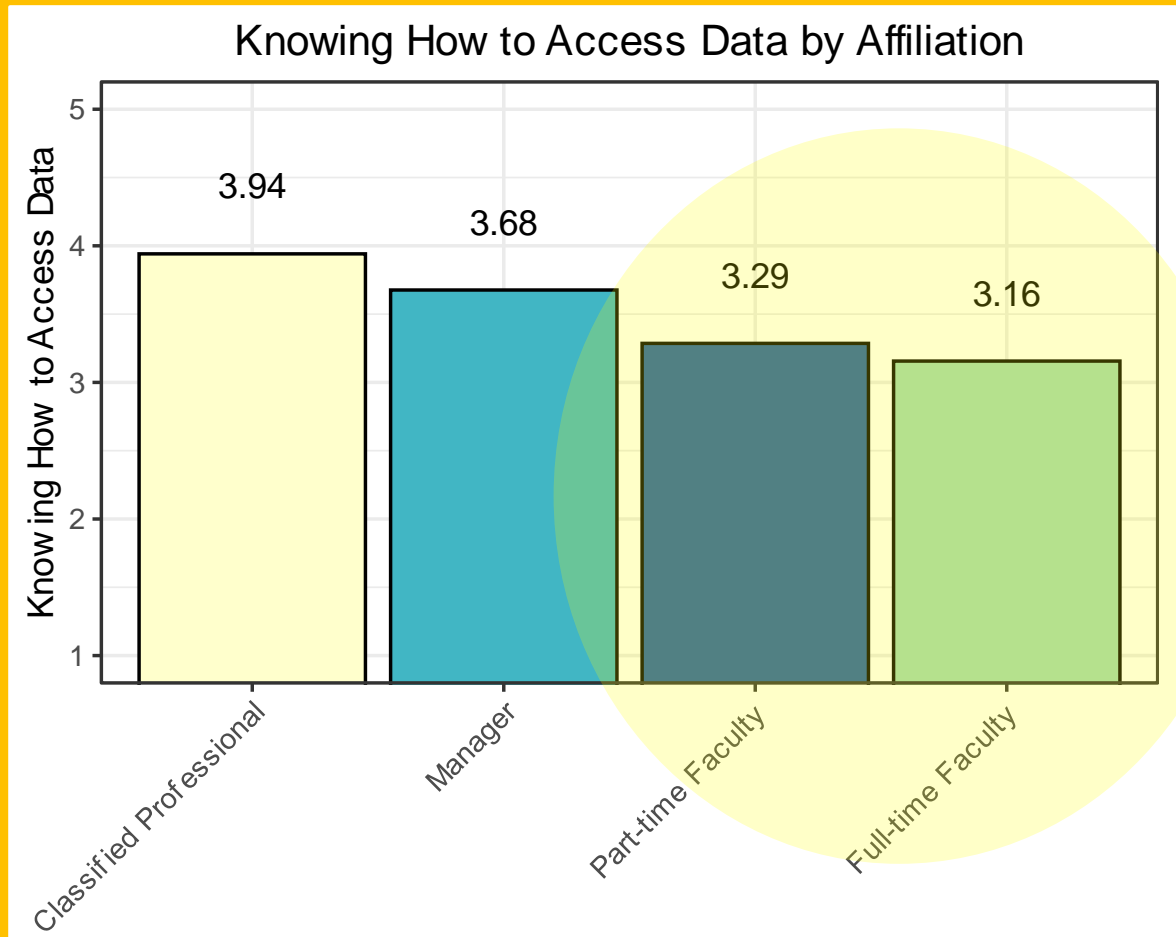


$F(3,149) = 6.94, p < .001$

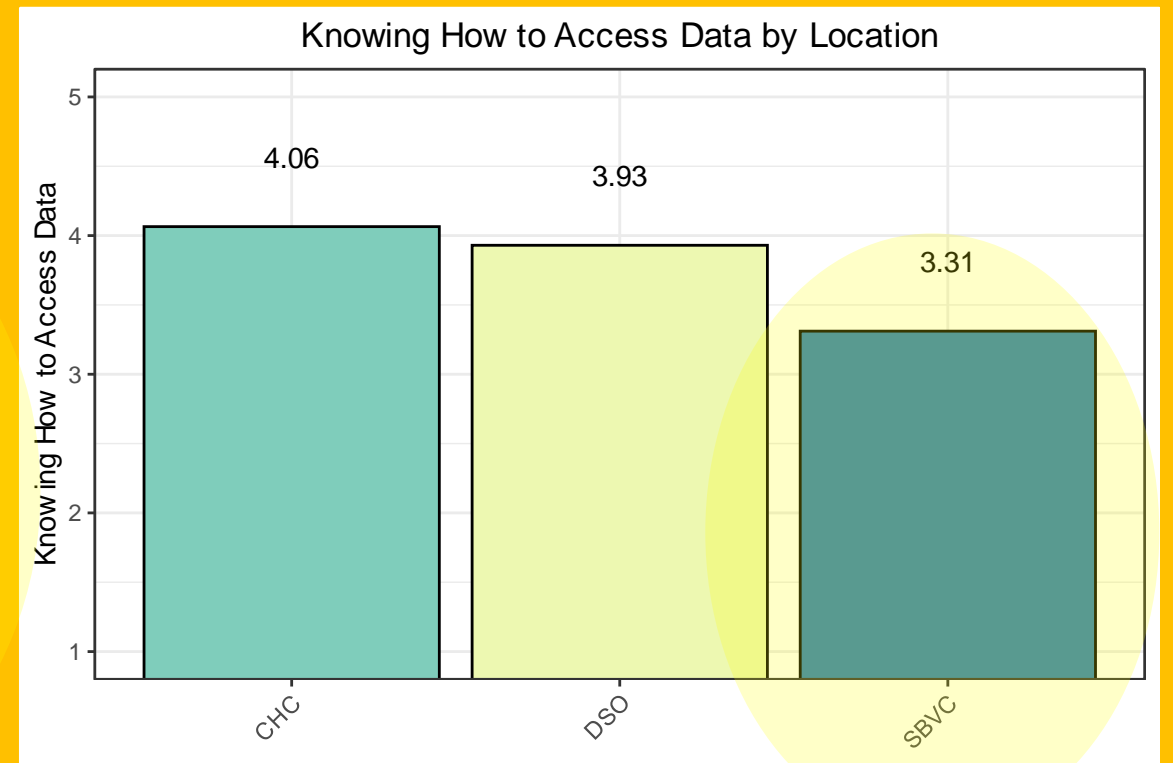
Over 1/3 of individuals are not sure they can access the data they need.



...particularly faculty members and individuals at SBVC.

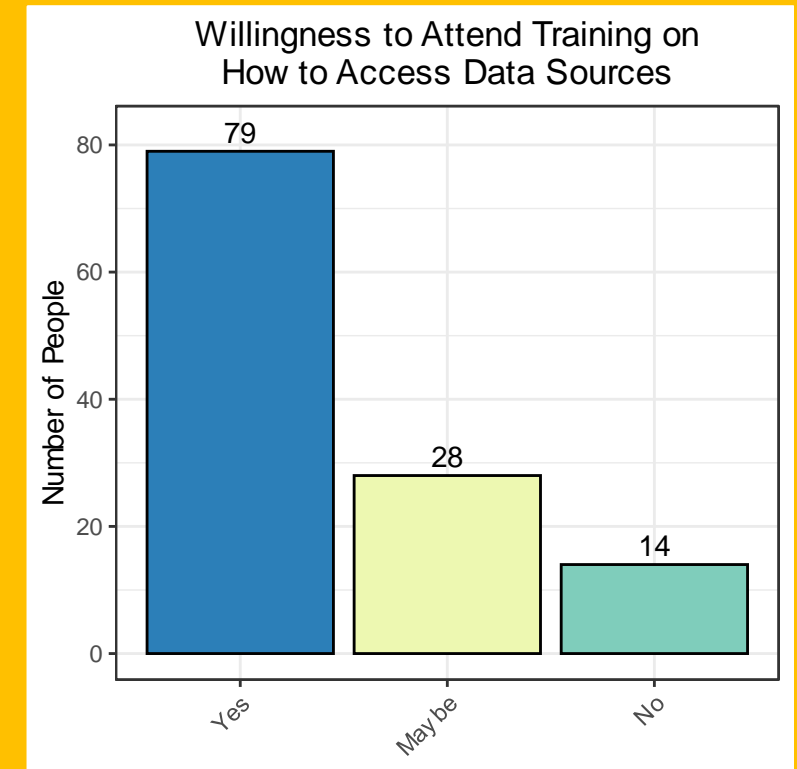
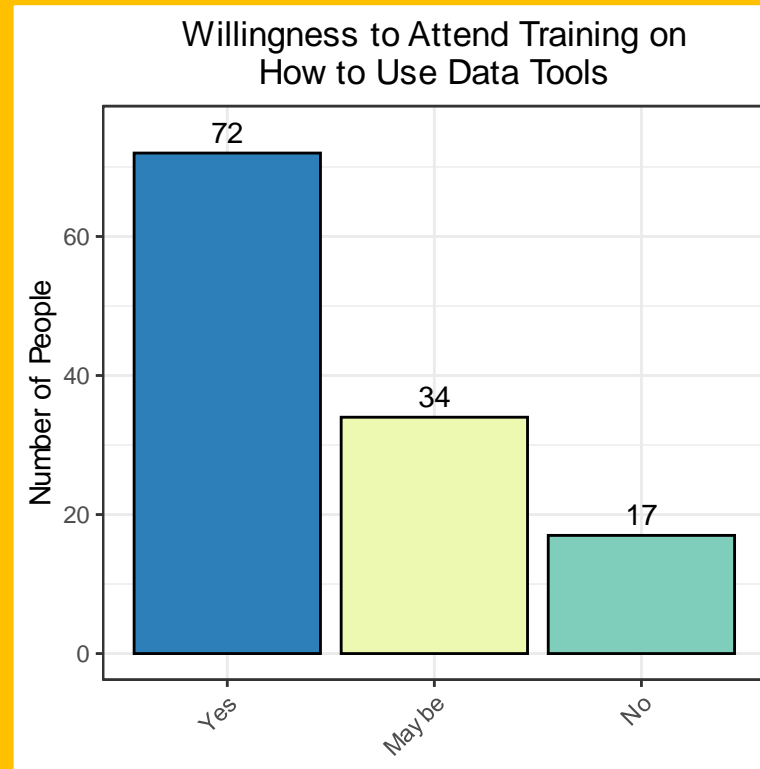
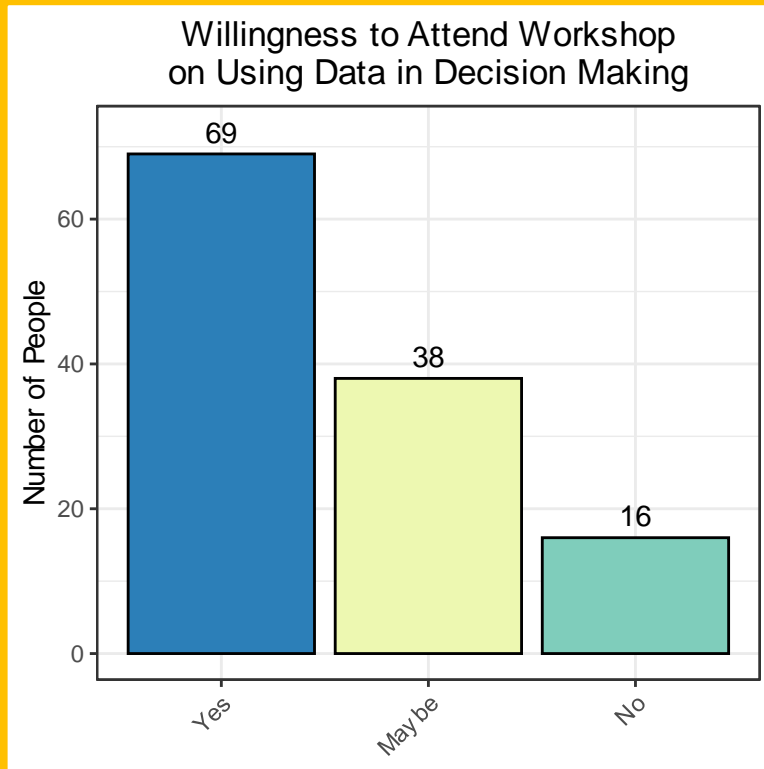


$F(3,144) = 3.70, p = .01$

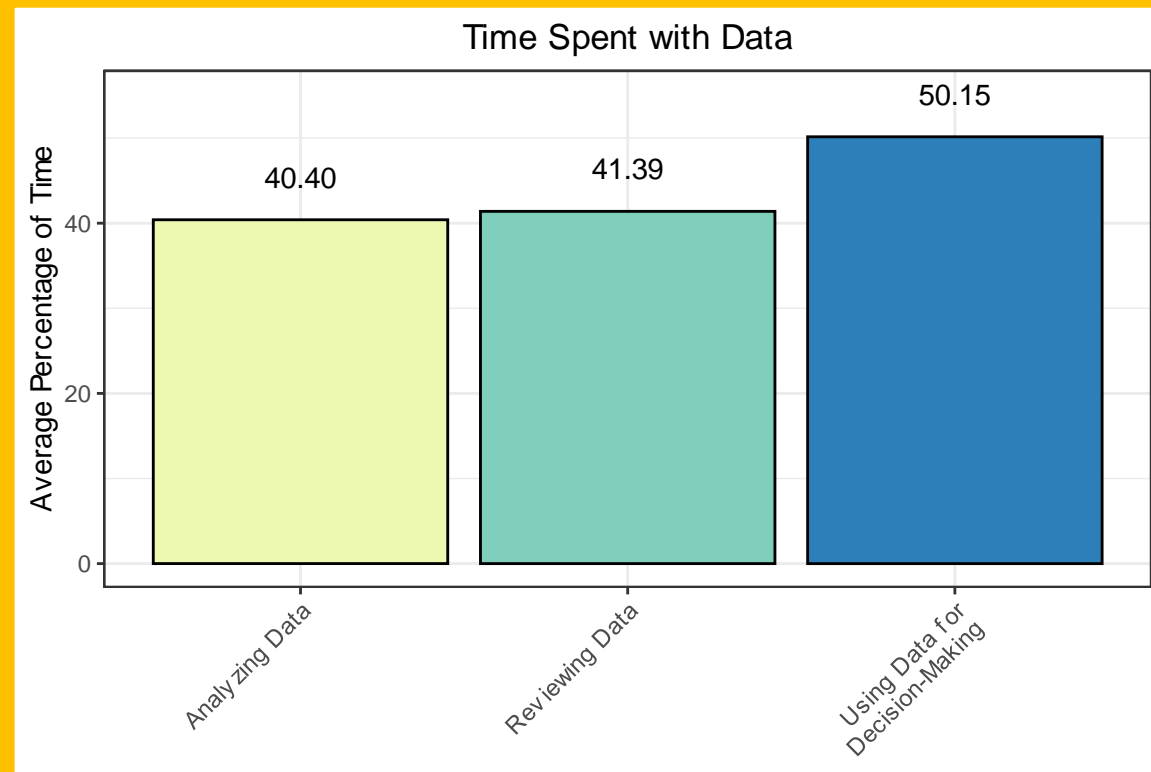


$F(2,145) = 6.29, p = .002$

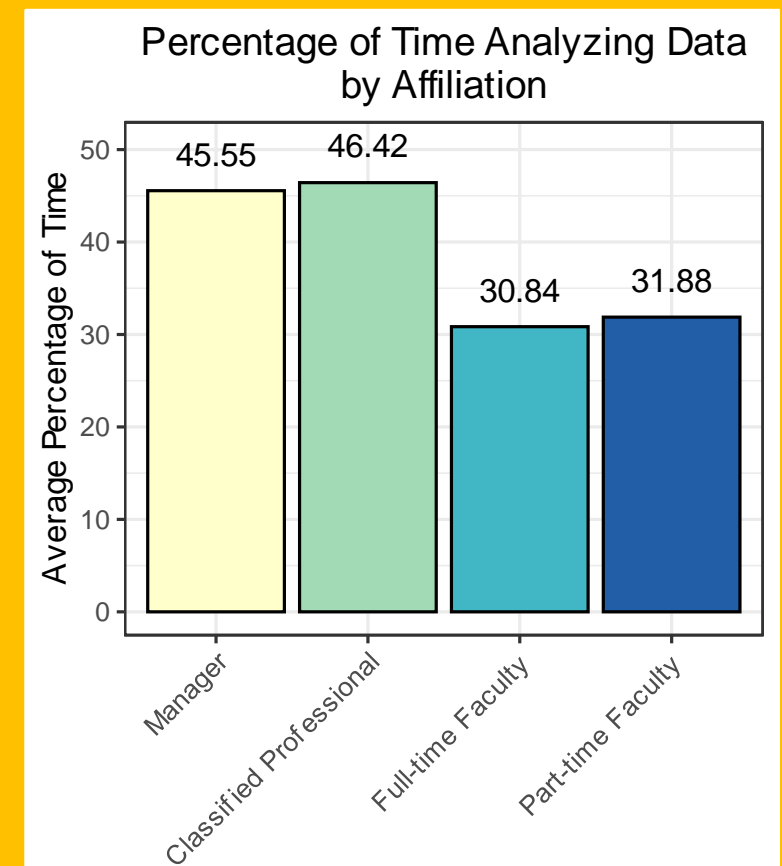
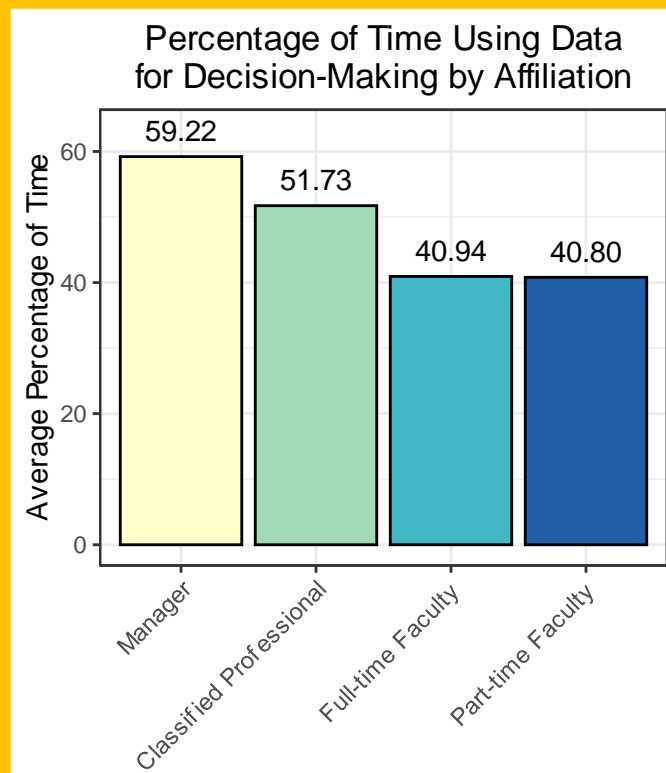
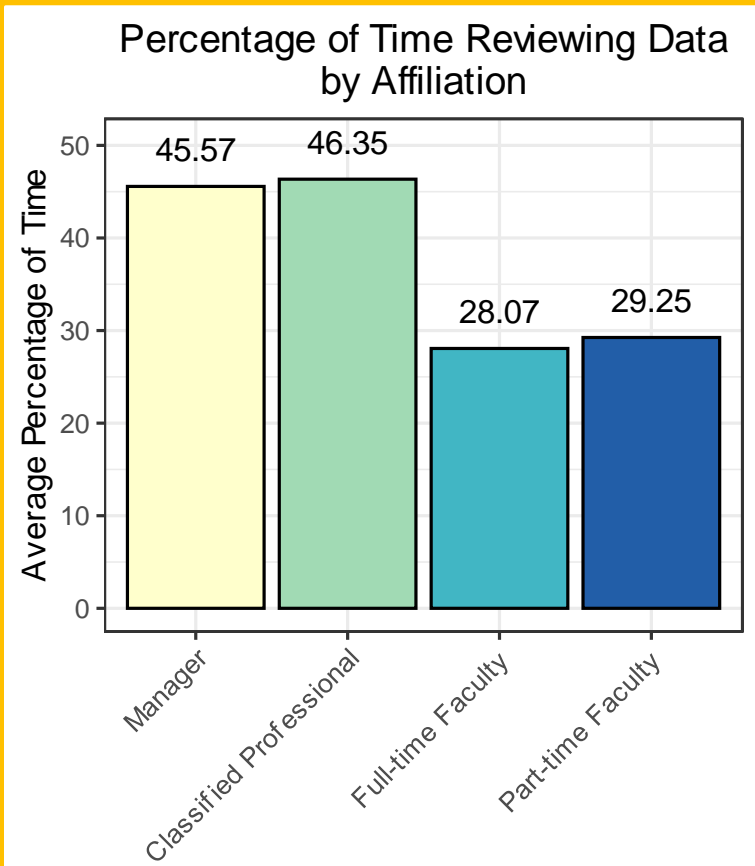
Most individuals are willing to consider attending workshops and receiving training on using data, data tools, and data sources. 😊



Individuals spend most of their time using data for decision-making.



Managers and classified professionals spent the most time reviewing/analyzing data and using data for decision-making.



How might SBCCCD improve data access?

Suggestions	Percentage
More accessible data	26%
Have data in one place	22%
Provide more training on how to use/access data	21%
Create dashboards to make pulling data more efficient	17%
Update SBVC website	5%
Other suggestions	9%

How might SBCCD improve data access?

More accessible data

26% of responses

- Ability to access data themselves
- Quicker response times from IR

How might SBCCCD improve data access?

Have data in one place

22% of responses

- Website/wiki for all data needs
- Financial data should be consolidated in one place
- Integrate data between student information systems and Starfish
- Integrate student-level data into Canvas

How might SBCCCD improve data access?

Provide more training on how to access/use data

21% of responses

- Send emails/newsletter to remind college what data can be provided
- Interpersonal, interactive, one on one approach with data requests
- Use an in-service time block to teach how to access/use data
- Have .pdfs or short videos available online
- Provide training for new managers
- Provide training for new faculty on how to use BORG Cubes

How might SBCCD improve data access?

Create dashboards to make pulling data more efficient

17% of responses

Update SBVC website

5% of responses

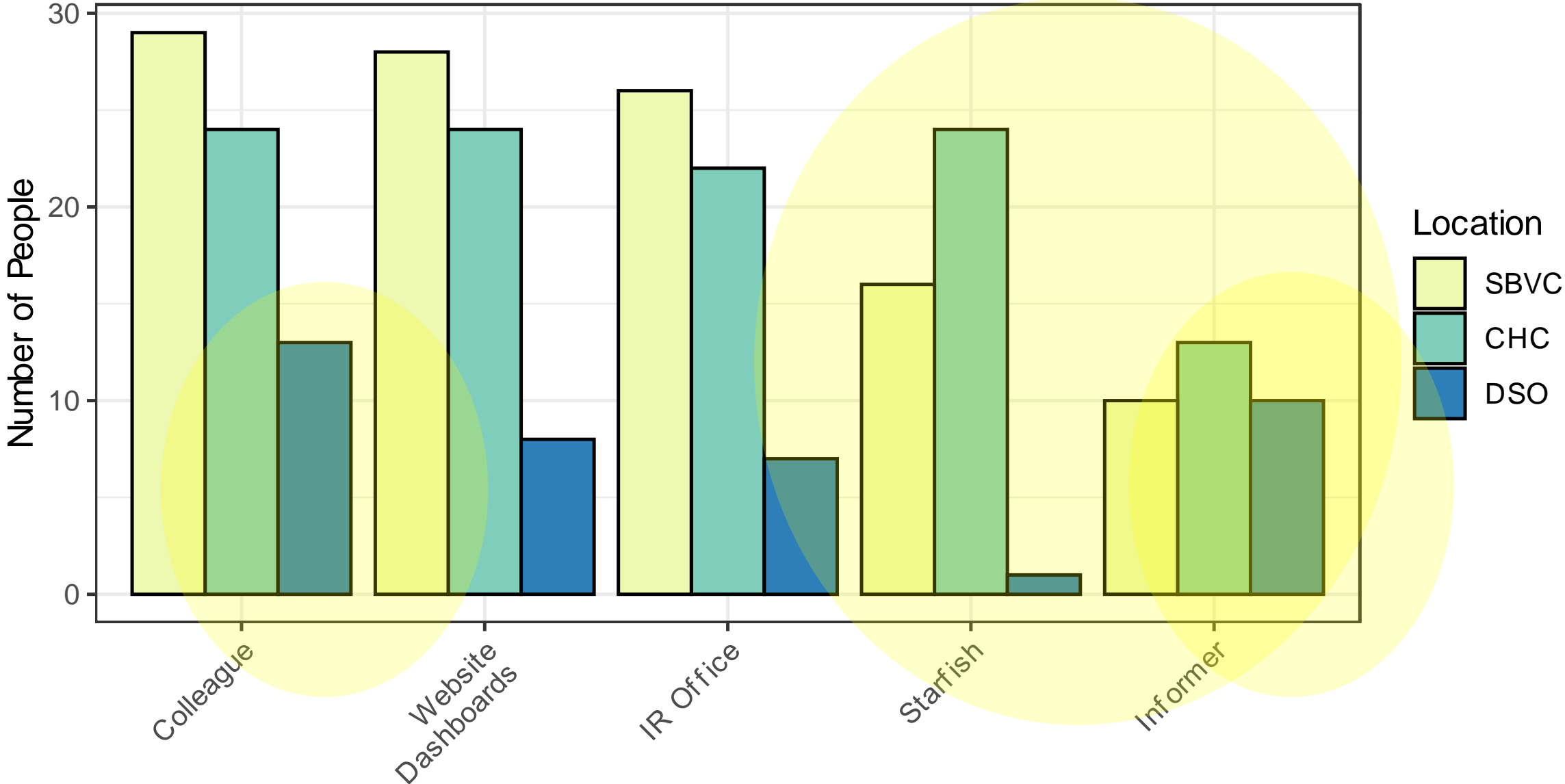
How might SBCCCD improve data access?

Other suggestions

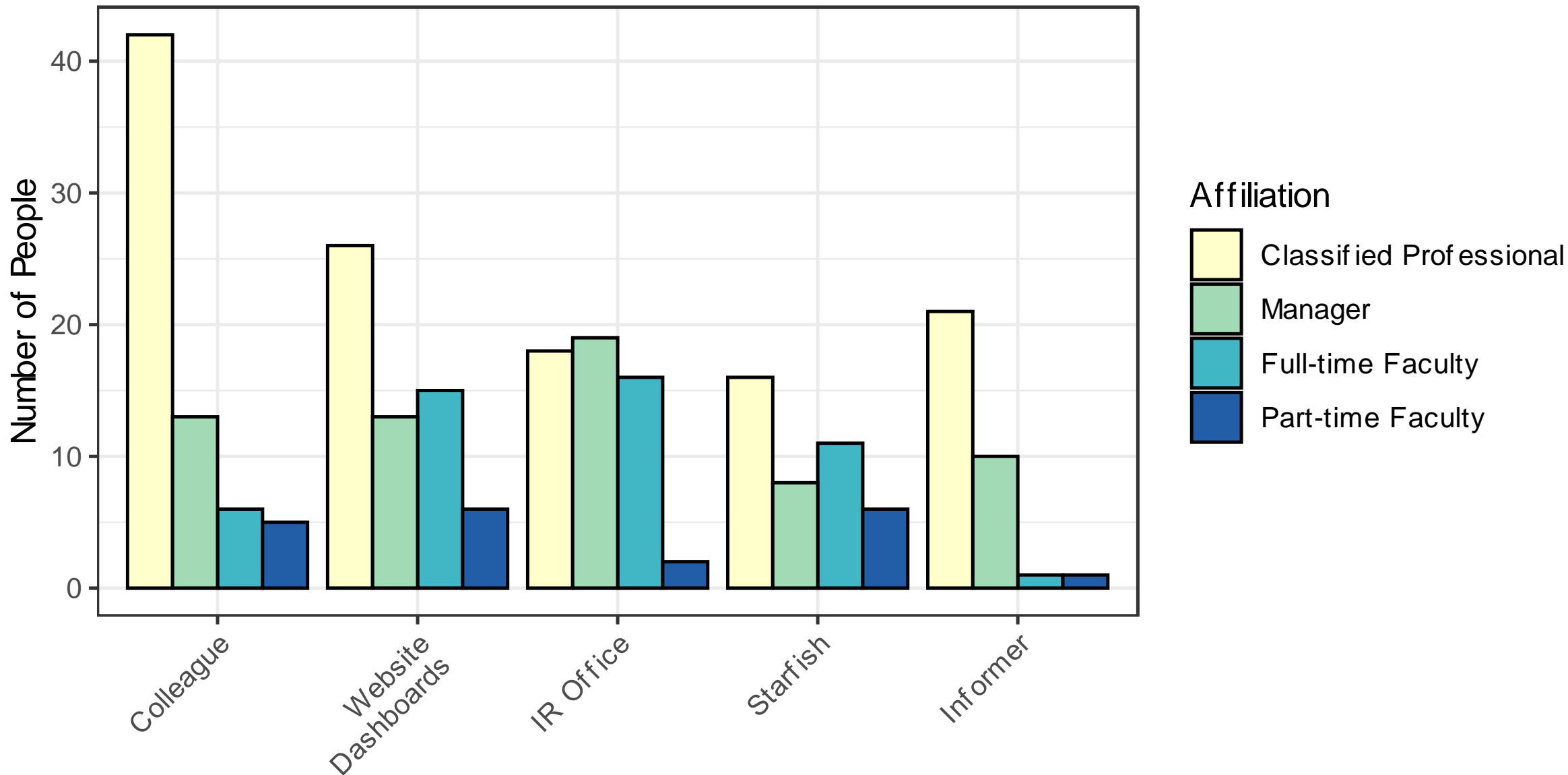
9% of responses

- Maintain a centralized list of students in special groups
- Provide larger data pipes for data travel and redundant circuits for outages
- Create weekly reports with budget, actuals, and encumbrances, and the ability to go down to department or object code level in those reports
- Track single parents
- Get rid of Canvas

How Data is Accessed by Location



How Data is Accessed by Affiliation



How Individuals Access Data

Ways of Accessing Data	Freq
Colleague	66
Dashboards on the CHC/District/ SBVC websites	60
Ask my Institutional Research Office	55
Starfish	41
Informer	33
State Chancellor's Dashboards	31
DataMart	30
SARS	26
MIS	22
NeoGov	11
I don't access any data	6
Websites	5
Asking the dean/chair/others	5
Canvas	5

Ways of Accessing Data	Freq
EIS	4
FINANCIAL 2000	3
Center of Excellence	3
Oracle	3
Other databases	3
Account Viewer	2
Census data	2
Cranium	2
EMSI	2
Launchboard	2
National Student Clearinghouse	2
Questica	2
Server access	2
Sunridge RIMS (Records Info Management System)	2

Other Ways
AccountViewer
Applications
Assist
CoARC
CurricuNet Meta
EDD
eValue by
Medhub
IPEDS
Maxient
National Center for Education
Statistics
Nova
Presence
Proliance
RP Group
SBCCD Portal
Self-compiled
User Verification
WebAdvisor

Summary

- Classified professionals access the most data, particularly using Colleague; whereas managers and faculty members most commonly ask their IR office to access data.
- Colleague, website dashboards, and asking the IR office are the most common ways individuals access their data.
 - Those from SBVC are more likely to access data using Colleague, the website dashboards, or asking the IR office.
 - Those from Crafton are more diverse in how they access data, and they are more likely to use Starfish and Informer than anyone else.
 - Those from the District are more likely access data using Colleague and Informer than other methods.

Type of Data Accessed

Type of Data Accessed	Percentage
Student	36%
Employee	21%
Student Support Services	16%
Curriculum Development	13%
Program Advisory Committees	7%
Other	5%
Financial	2%
Facilities	<1%
Technical	<1%

Type of Student-Level Data Accessed

Student Data Accessed	Percentage
Demographics	15%
Enrollment Status	15%
Scheduling	11%
Education Goals	10%
Graduation Status	9%
Unit Accumulation	8%
Financial Aid	7%

Student Data Accessed	Percentage
Satisfaction	6%
Math/English Placement	5%
Transfer Ready	4%
High School GPA	4%
Health Services	3%
Student Performance	1%
Other	<1%

Type of Course-Level Data Accessed

Type of Course-Level Data	Percentage
Instructional modality	22%
Section enrollments	21%
Efficiency/productivity data	12%
FTES totals	12%
Meeting time	10%
Course length	9%
Other	<1%
Program Evaluation	<1%

How Data is Used

Data Purpose	Percentage
Needs assessments	10%
To improve department polices and procedures	9%
Program Review	8%
Special Populations	8%
To complete state reports	7%
Program learning outcomes	7%
Student learning outcomes	7%
Marketing/Outreach	6%
Community Demographics	6%
Enrollment management	6%
Grants	6%
Resource requests	6%
Course enhancements	5%
Operating hours and services	4%
Accreditation	4%
Other (please specify in textbox below):	1%
Program operations	<1%
Financial/Budgeting	<1%

