

# SBVC Wi-Fi Instructions

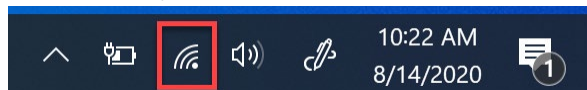
When on campus at Valley College, there are 2 options for Wi-Fi networks – SBVC and SBVC\_Guest.

SBVC is used for staff, faculty and students who need internet access on laptops or other mobile devices.

SBVC\_Guest is used primarily for guests, however students, staff, and faculty may use this limited connection to gain access to the campus WiFi with laptops or other mobile devices.

To log into these Wi-Fi networks from a Windows laptop or MacBook, follow the below steps.

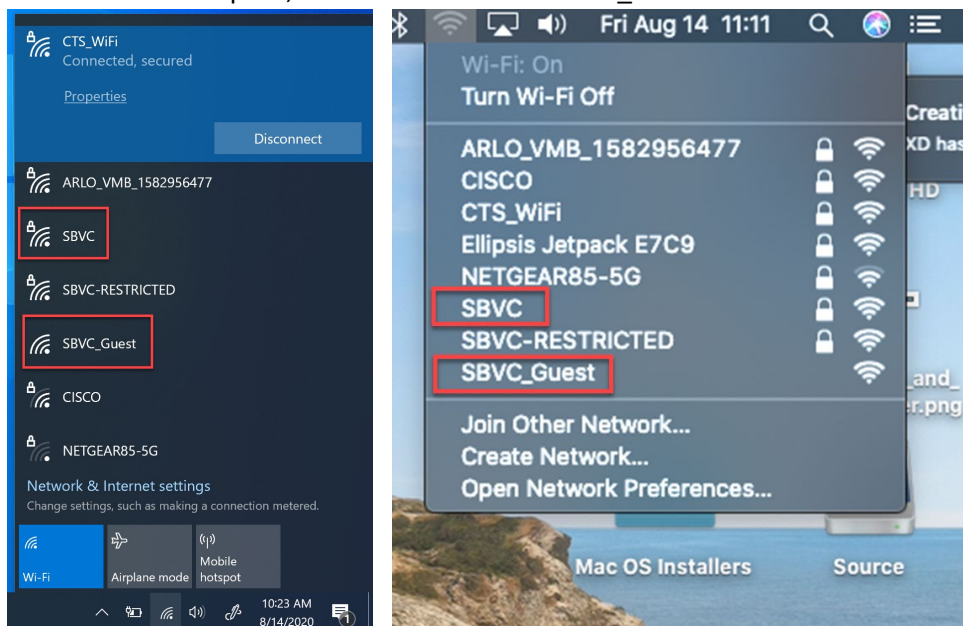
1. Click on the Network icon on your device.
  - a. On Windows, this is in the taskbar in the lower right.



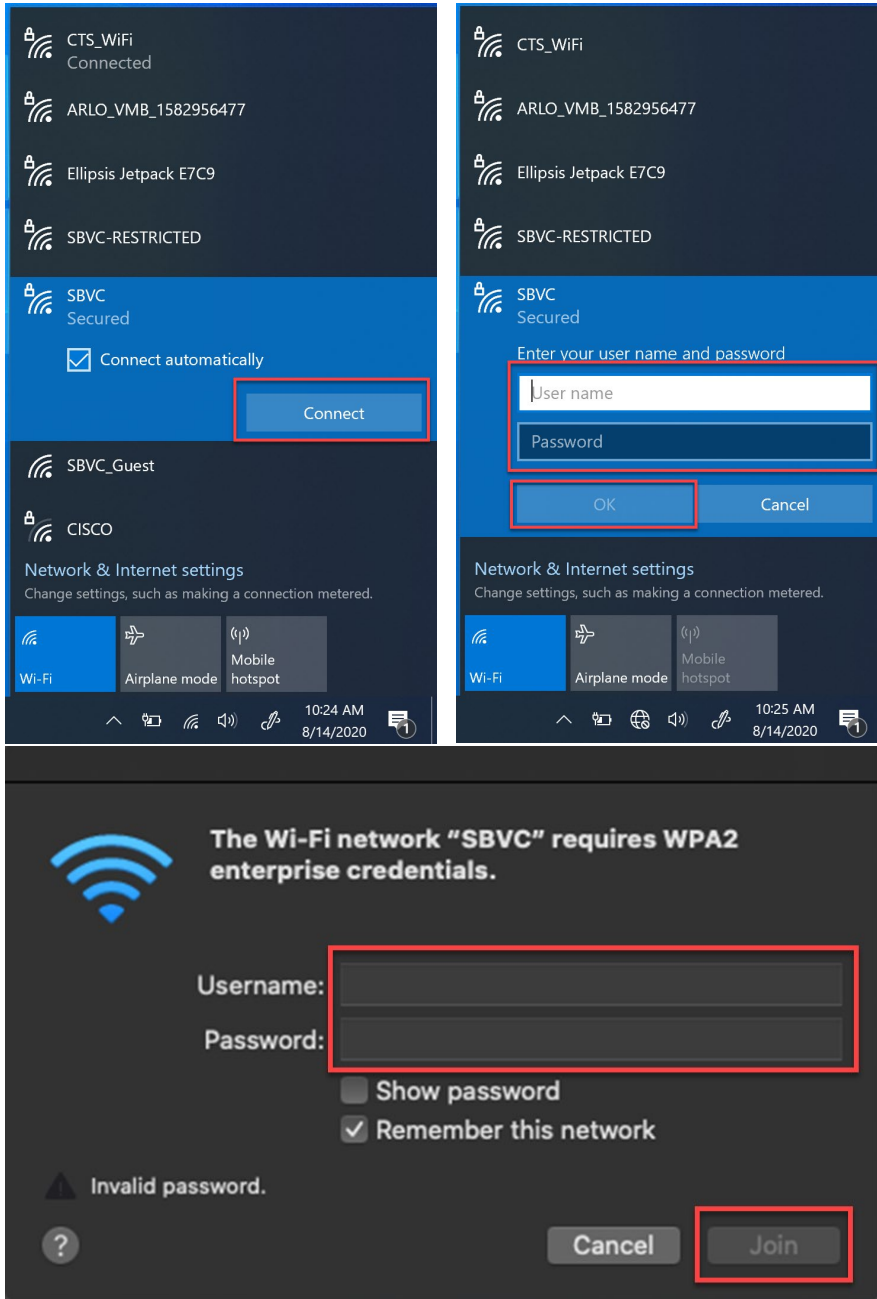
- b. On MacOS, this is in the menu bar in the upper right.



2. In the menu that opens, select either SBVC or SBVC\_Guest.

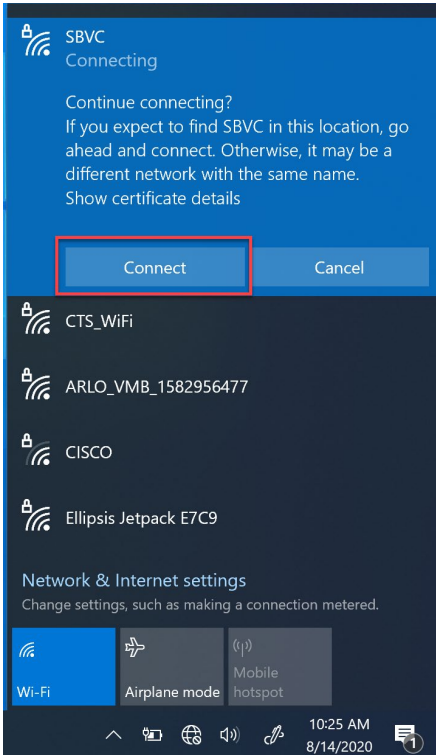


3. When selecting SBVC, you will be prompted to enter your username and password. You will need to use your campus username and password; this is the same password that you log into WebAdvisor with. Students must enter their Valley College email and password here.
  - a. On Windows, you will need to click Connect after clicking on SBVC to move to the login prompt.

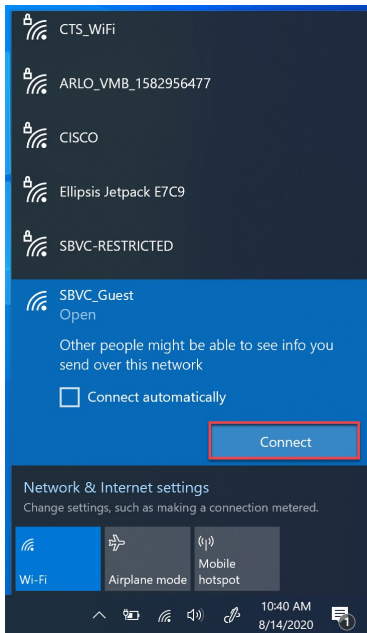


- b. After entering your username and password, click OK if on Windows, or Join if on MacOS.

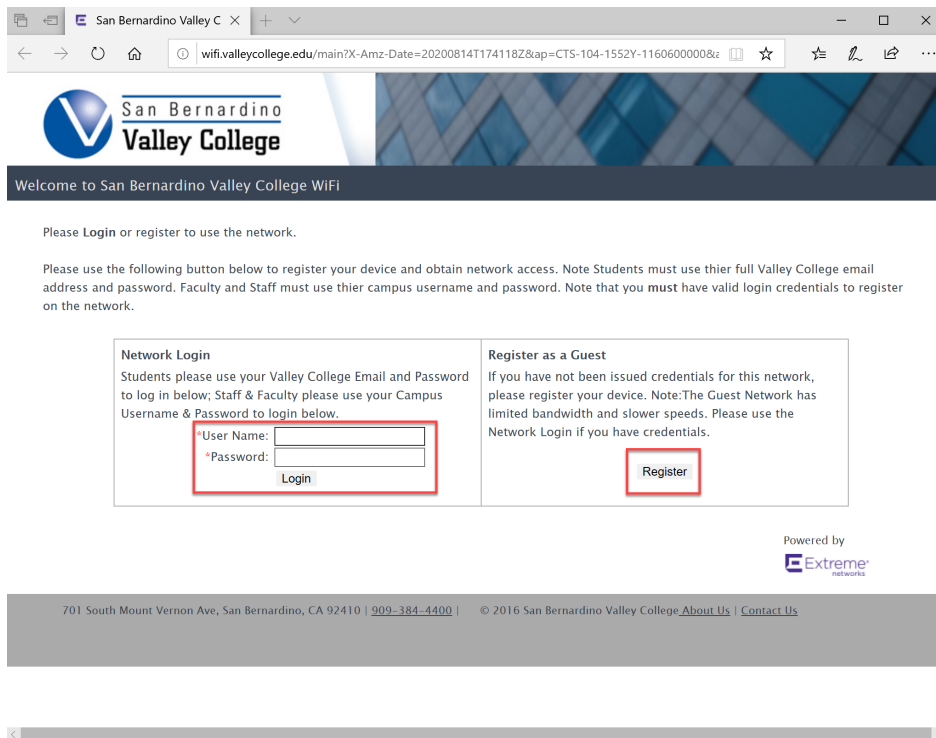
4. You may be prompted to accept a certificate to connect, on Windows click Connect or on MacBook click Continue.
  - a. On MacOS you will be prompted to enter credentials for an admin user to accept the certificate, enter the credentials for an admin user to continue.



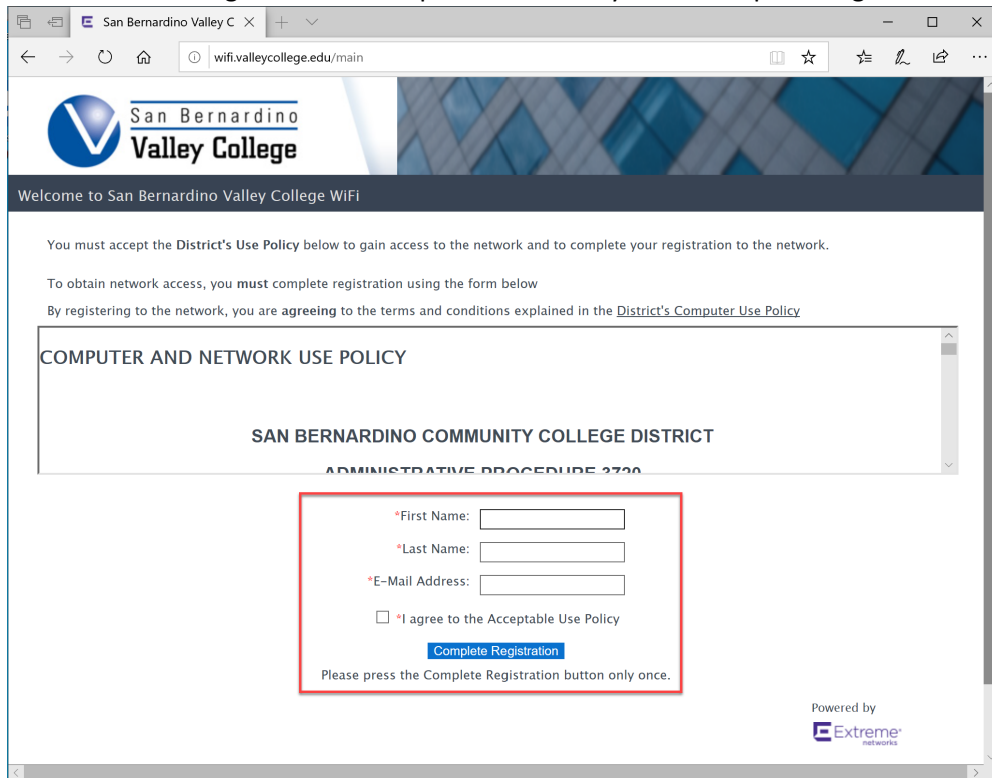
5. When selecting SBVC\_Guest, you will be taken to a web site to continue the login process.
  - a. On Windows, you will need to click Connect after clicking on SBVC\_Guest to move the login page.



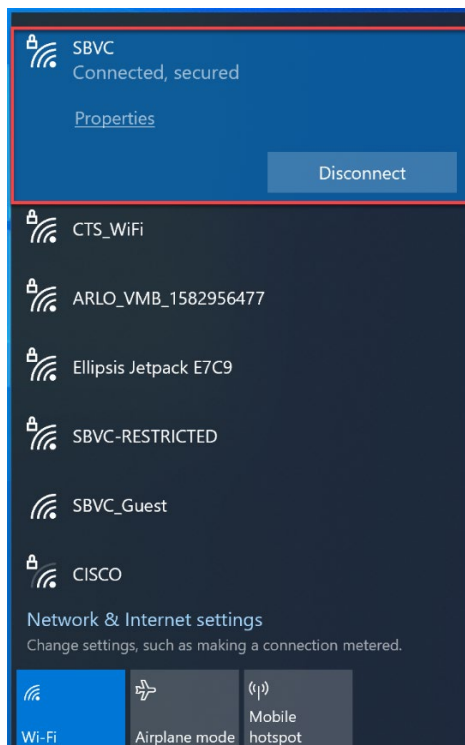
6. On the page that opens, you have 2 options.
  - a. Network Login – students can enter their Valley College email and password here, staff/faculty enter their campus username/password here. Click Login to connect.
  - b. Guest can click on the Register button to move to the next step.



7. If continuing at a Guest, you will need to enter your First Name, Last Name, E-mail address, and check the box to agree to the Acceptable Use Policy. Click Complete Registration to connect.



8. Once connected, the Network icon on MacOS will change to a solid color and on Windows if you click the Network icon it will show the connected network at the top of the list and say Connected.



To log into these networks from an iOS or Android mobile device, please follow the below steps.

For iOS:

1. Open the settings app and click on the Wi-Fi option.
2. Select either SBVC or SBVC\_Guest.
3. For SBVC – enter your campus username/password and click Join.
  - a. If a certificate warning comes up, click on Trust to continue.
4. For SBVC\_Guest – on the login page that opens, you have 2 options: Network Login or Register as a Guest.
  - a. Network Login – students enter their Valley College e-mail and password here, staff/faculty enter their campus username/password here. Click Login to connect.
  - b. Guest can click on the Register button to move to the next step.
5. If continuing as a Guest, you will need to enter your First Name, Last Name, E-mail address, and check the box to agree to the Acceptable Use Policy. Click Complete Registration to connect.
6. Once the Wi-Fi has connected, a check mark will appear next to the Wi-Fi name in the Wi-Fi settings and a Wi-Fi signal icon will appear in the upper right of the screen.

For Android version 10 and earlier:

1. Open the settings app and click on Connections then select Wi-Fi.
2. Select either SBVC or SBVC\_Guest.
3. For SBVC – enter your campus username/password and click Connect.
  - a. If a certificate warning comes up, select Do Not Validate.
4. For SBVC\_Guest – on the login page that opens, you have 2 options: Network Login or Register as a Guest.
  - a. Network Login – students enter their Valley College e-mail and password here, staff/faculty enter their campus username/password here. Click Connect to connect.
  - b. Guest can click on the Register button to move to the next step.
5. If continuing as a Guest, you will need to enter your First Name, Last Name, E-mail address, and check the box to agree to the Acceptable Use Policy. Click Complete Registration to connect.
6. Once the Wi-Fi has connected, a Wi-Fi signal icon will appear in the upper right of the screen.

For Android version 11 and later:

1. Open the settings app and click on Network & Internet then select Network.
2. Select either SBVC or SBVC\_Guest
3. For SBVC:
  - a. For the CA certificate, select **Use system certificates**
  - b. Online Certificate Status **Do not verify**
  - c. Enter the domain **wifi.valleycollege.edu**
  - d. Enter campus username in **Identity**
  - e. Skip – **Anonymous Identity**
  - f. Enter current password
  - g. Choose - **Connect**
4. For SBVC\_Guest – on the login page that opens, you have 2 options: Network Login or Register as a Guest.
  - a. Network Login – students enter their Valley College e-mail and password here, staff/faculty enter their campus username/password here. Click Connect to connect.
  - b. Guest can click on the Register button to move to the next step.
5. If continuing as a Guest, you will need to enter your First Name, Last Name, E-mail address, and check the box to agree to the Acceptable Use Policy. Click Complete Registration to connect.
6. Once the Wi-Fi has connected, a Wi-Fi signal icon will appear in the upper right of the screen.

## How to troubleshoot wireless network issues on-campus at SBVC.

If you are having problems connecting or re-connecting to SBVC WiFi, it's important to isolate and remove any potential conflicts. These steps will show you how to delete all of the SBVC wireless network profiles. Once completed, please follow the step above on connecting to SBVC's WiFi.

To begin troubleshooting perform the following steps to "forget" the wireless network (SBVC, SBVC\_Guest, SBVC-RESTRICTED) for your specific device:

### How to forget wireless networks: Windows 10

1. Click the **Wi-Fi button** from the bottom-right corner of the taskbar. This opens the list of networks available in your area.
2. **Right-click** on the name of the network that you want to remove (SBVC, SBVC\_Guest, SBVC-RESTRICTED).
3. Choose the **Forget** option.
4. **Repeat** for the remaining SBVC wireless networks.

### How to forget wireless networks: OS X

1. Open **System Preferences**
2. Click **Network**, then **Advanced...**
3. Select a network you'd like to forget and click the "-" icon as shown below. You can select multiple networks by holding the command key while clicking and batch the process.

### How to forget wireless networks: iOS Mobile device

1. Open the settings app and select Wi-Fi
2. Select the network you wish to forget
3. Click "Forget This Network"

### How to forget wireless networks: Android

1. Open settings and navigate to the page that lists your available WiFi networks.
2. . Press and hold the network you want to forget. Select "Forget network" from the pop-up menu.

That's it, now you can follow the instructions above to re-connect to SBVC WiFi!