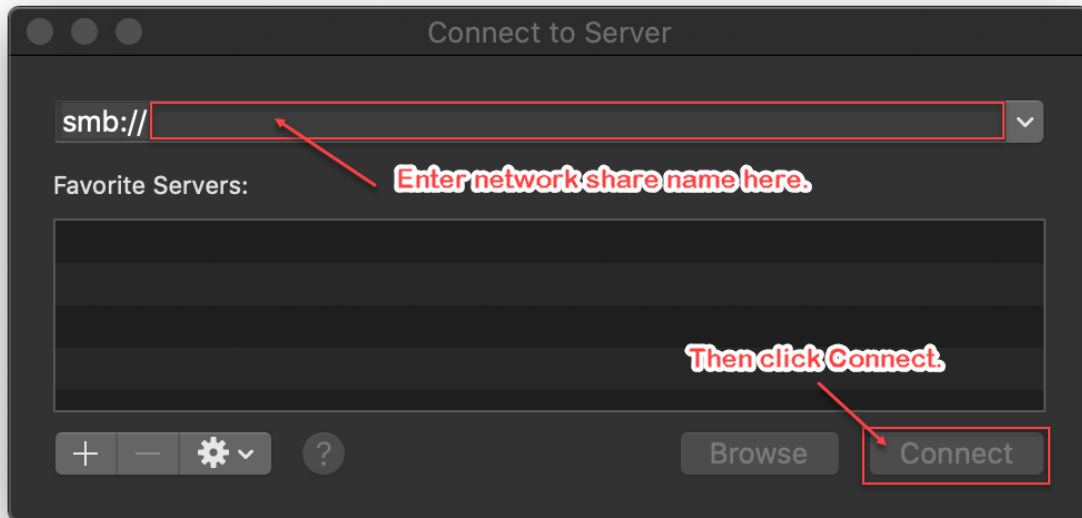



How to map a network drive – MacOS

1. Press Command + K to open the Connect to Server window.
2. In the Connect to Server window, enter the path for the network share then click Connect.
 - a. Network path will be smb://network_path where network_path is the address for the network drive you are connecting to.



3. When prompted for credentials, enter your SBCCD username and password.
 - a. This is the same username and password used to log into webadvisor.
4. You will need to enter your credentials for the network drive on every reboot. To make this so the network drive connects on every boot, proceed to the next page for steps on adding the drive as a login item for your user account.

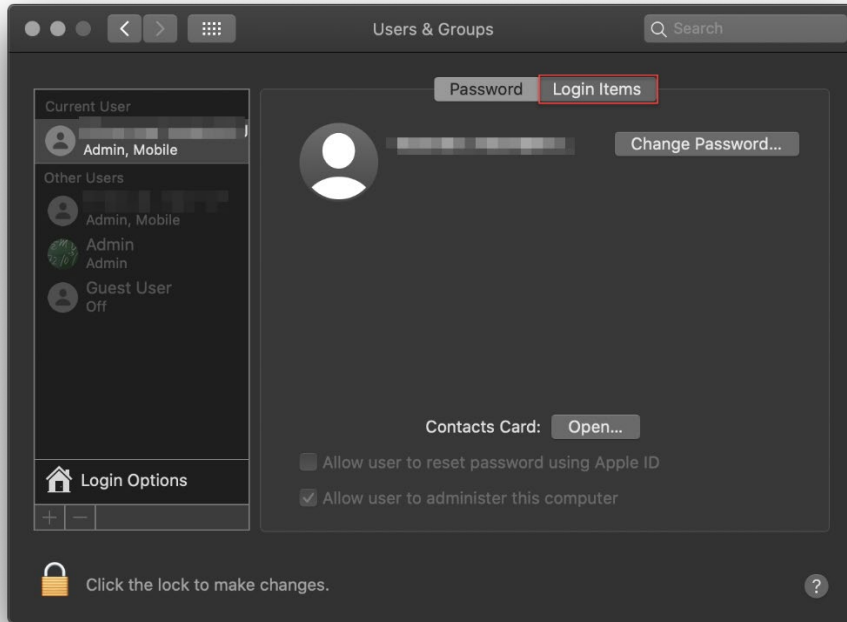
Add mapped network drive as login item

1. Click the System Preferences icon  in the Dock to open the System Preferences window.

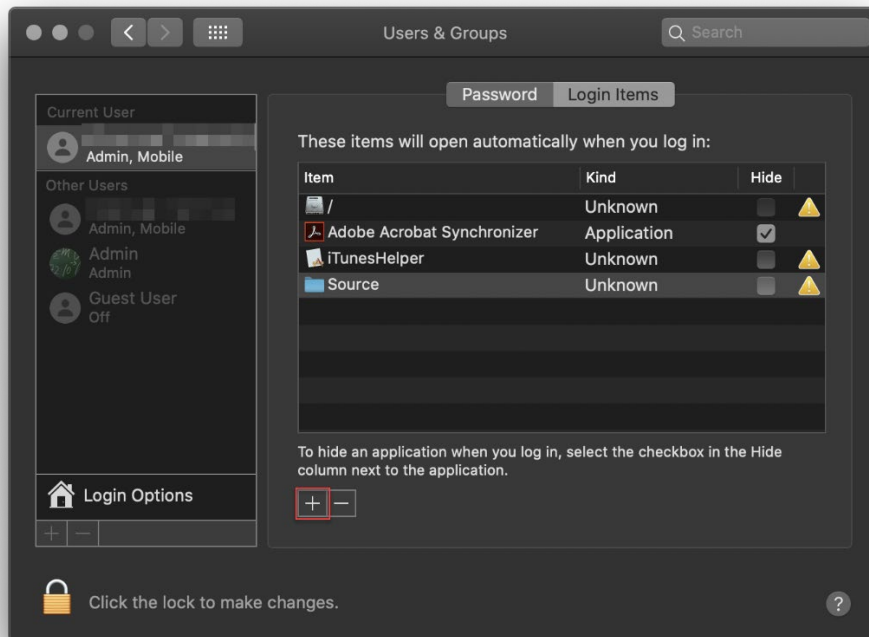


2. In the System Preferences, click on Users & Groups to open the Users & Groups settings.

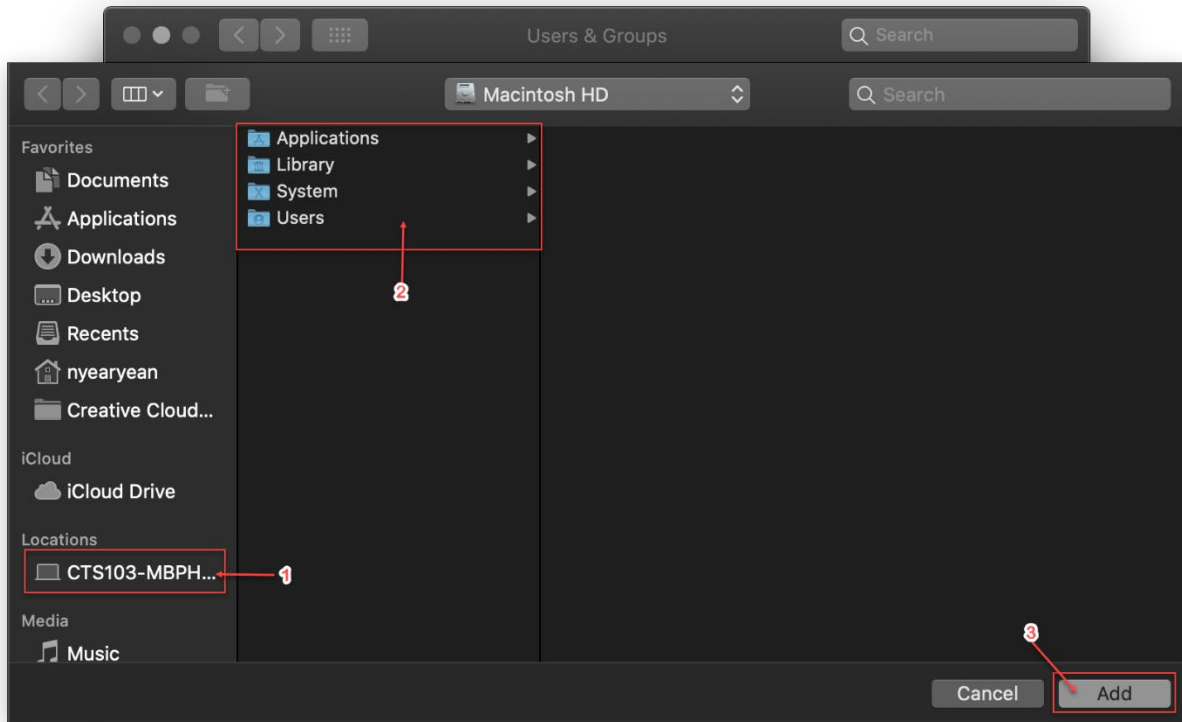
3. In the Users & Groups window, click on Login Items to access the Login Items settings.



4. In the Login Items window, click the + button to open the window to select the network drive to add as a login item.



5. In the window that opens, select your computer on the left side under Locations (1). Then select the network drive that you want to add as a login item (2). Finally click Add (3).



6. After clicking Add, the mapped drive will appear in your list of login items. You can now close the System Preferences. The mapped drive will now connect on each login.
 - a. NOTE: These steps will need to be repeated for any additional drives and for each user on the Mac.