

Inland Empire/Desert **GUIDED PATHWAYS** **2024-2025** **RESOURCE GUIDE**



<https://tinyurl.com/IED-GPResource-Guide>



FOUNDATION *for* CALIFORNIA
COMMUNITY COLLEGES

Welcome to the Inland Empire/Desert Guided Pathways Resource Guide, created to support college leaders in implementing equity-focused redesigns on their campuses. This toolkit is your central resource hub for integrating new partners and accessing essential tools. It's regularly updated with the latest resources. For easy navigation, click on the links in text bubbles or follow the arrows on the graphics!

We know you're busy, so to get started easily:

1 SIGN UP FOR THE
IE/D REGIONAL
GUIDED PATHWAYS
LISTSERV



To sign up, e-mail
Angelica Ibarra

2 REGISTER FOR
THE 2024
SYSTEMWIDE
WEBINARS

REGISTER NOW



3 KEEP THIS RESOURCE
GUIDE CLOSE AT
HAND—ADD IT TO
YOUR FAVORITES!



[https://tinyurl.com/
IED-GPResource-Guide](https://tinyurl.com/IED-GPResource-Guide)

THIS GUIDE HAS BEEN MODIFIED BASED
ON THE WORK OF THE SAN
DIEGO/IMPERIAL GUIDED PATHWAYS
REGIONAL COORDINATORS
STACY TEETERS & SYMONE MCDANIELS.



*A special thank you and
acknowledgment for
their accomplishment!*



TABLE OF CONTENTS

<i>Welcome Message</i>	2
------------------------	---

Inland Empire/Desert Resources

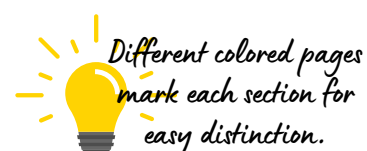
Meet the GPRCs	4
Our Theory of Change & Support Options	5
Communities of Practice	6-8
Student Equity Planning Institute	9-10
GP Norco's College Podcast	11
GIA's Radio Show & Podcast	12

System-Wide Resources

Vision 2030	13
Vision 2030: Guided Pathways Spotlight	14
CO Resources & Insights	15

Tools

NEW GP Demonstration Project Playbook	16
GP Equity Resources	17
NEW GP Artificial Intelligence	18
GP Listservs	19
GP Canvas Shells	20
GP Vision Resource Center	21
GP Readings (Articles & Books)	22



YOUR INLAND EMPIRE/DESERT GP REGIONAL COORDINATOR TEAM



Angelica Ibarra

*Proudly serving College of the Desert,
Copper Mountain, Crafton Hills,
Mt. San Jacinto, Palo Verde, and
San Bernardino Valley Colleges*



CONTACT:

aibarra@foundationccc.org

Over her 25-year career in higher education, Angelica has had comprehensive leadership experience on engagement & retention initiatives ranging from working directly with students to campus-wide reforms. In her past roles at Cal Poly Pomona and Harvey Mudd College, she worked directly with varied constituents on intervention strategies, she developed and led multifaceted social justice education programs in all areas of intercultural competence, leadership, and student development. Angelica holds a bachelor of science degree in business administration and management from the University of Redlands and her Master's degree in Organizational Leadership from American College of Education. Angelica enjoys making do-it-yourself projects, watching Netflix movies, and playing board games with her husband and four sons.

Leslie Valmonte

After nearly 25 years, Leslie feels blessed to continue her passion for building bridges between students, families, schools, employers, and communities. She leverages her strong background in school and community transformation approaches, strategic planning; capacity building; evaluation; policy and coalition building to improve access to high quality education for all. She is currently serving as an adjunct faculty at Chaffey College in work experience and dual enrollment. She received her BA in Political Science from UC Irvine and her Master's in Public Policy with a concentration in Regional Development and Education from UCLA. Her most recent "proud mommy moment" was when her then 10-year-old son organized a school "rebellion" to protest "unfair" playground rules. He mobilized his classmates to vote for the two students who agreed to help change the rules if they were elected into the School Senate. After high-fiving him for his spirit of civic engagement, she quickly followed up with a discussion on the importance of playground safety. 😊



*Proudly serving Barstow,
Chaffey, Moreno Valley,
Norco, Riverside City, and
Victor Valley Colleges*



CONTACT:

lvalmonte@foundationccc.org

OUR THEORY OF CHANGE

We aim to transform student experience using data-driven practices & holistic student engagement to strive for racially equitable outcomes.

We aim to utilize a student-centered approach to promote policies, procedures, materials, and evaluation processes. To build individual, college, and regional capacity that maximizes college transformation, we do this by creating opportunities for learning from and with each other. To create a support network for practitioners/by practitioners that reduces silos and promotes the co-creation of innovative strategies that lead to equitable outcomes and increases academic completion in all the 12 California Community Colleges within the Inland Empire/Desert Region.



Inland Empire/Desert GP Student Leadership Institute Nov. 2021

IE/D SUPPORT OPTIONS

***Graphic by San Diego/Imperial GPRCs*

Workgroups or Committee Support

- Outreach & Onboarding Work Group
- Creating an Equity & Retention Committee

Project-Based Support

- Student Services Redesign Initiative
- Data Coaching Design support



Small Leadership Group Thought Partnership

- Supervisors group meeting
- Dept. Deans, Chairs, & Committee leaders

Individual Coaching/Thought Partnership

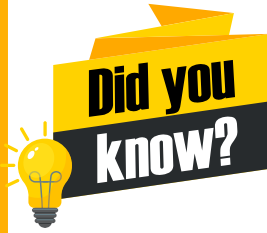
- New proposals, ideas, & discussion from any of you!

Event or Professional Development Support

- Convocation, Flex Workshops, Institution Day
- Classified Professional Conferences

COMMUNITIES OF PRACTICE

Inland Empire/Desert



A community of practice is like a dynamic, supportive network where people come together to share knowledge, solve problems, and grow professionally, all while building lasting connections and learning from each other's experiences.

Everyone in the role is warmly invited to join our communities of practice—your insights and participation are valued and essential!

GUIDED PATHWAYS LEADS

Dedicated space for GP campus leads to: Learn about GP-related tools, resources, and announcements from the Chancellor's Office; Share expertise; Discuss campus challenges; and Explore opportunities to advance GP implementation at the campus and district levels.

Facilitated by your IE/D GPRCs

Leslie Valmonte LValmonte@foundationccco.org
and **Angelica Ibarra** aibarra@foundationccc.org

Palo Verde College

INLAND EMPIRE/DESERT GUIDED PATHWAYS LISTSERV

Click here to join 

This listserv is intended to connect with core GP teams at colleges throughout the IE/D region. Ask for & share promising practices, share GP-related events, and discuss strategies on how to institutionalize GP.

CLASSIFIED PROFESSIONALS NETWORK



The only regional community of practice in the state created by and for Classified Professionals to connect with peers from other community colleges. Energizing space to build leadership capacity and align work with campus-wide Guided Pathways efforts. **FMI contact co-chairs**
Dr. Natalie Halsell

Natalie.Halsell@rcc.edu,

Hope Ell Hope.Ell@chaffey.edu, or

Trisha Albertsen

Trisha.Albertsen@chaffey.edu

COMMUNITIES OF PRACTICE

Inland Empire/Desert



REGION 9 STUDENT EQUITY (SE) LEADERS NETWORK



One of only two grassroots regional communities of practice in the state dedicated to individuals leading campus-wide Student Equity and Achievement Programs. Their mission is "to share promising practices for closing the equity gap, promote collaboration amongst campuses, and represent a cohesive and informed voice for the expansion of equitable educational attainment throughout the region."

FMI contact co-chairs

Dr. Kristi Woods: Kristi.Woods@rcc.edu

or Dr. Gustavo Oceguera:

Gustavo.Oceguera@norcocollege.edu

IE/D COUNSELING ADMINISTRATORS

New in 2023 to the Inland Empire/Desert region, this community of practice has been created to share promising practices, leverage participant's expertise, and share tools to identify and crowdsource strategies to support students through the counseling departments.

FMI contact Dr. Citlali Gonzales

cgonzales@msjc.edu **or Dr. Ivan Pena**

mpena@craftonhills.edu



COMMUNITIES OF PRACTICE

Inland Empire/Desert

FINISH LINE SCHOLARS

This \$100 million program, (many thanks to the Jay Pritzker Foundation!) seeks to help eliminate regional educational gaps by providing emergency financial aid to students facing unexpected hardships and scholarships to students on their way toward a "finish line goal" of transferring or completing a certificate or degree. Launched in 2020, colleges in the Inland Empire/Desert, Central Valley, and the Far North received \$125K per year in this initial 5-year phase. As an additional resource, a statewide community of practice was created to connect participating colleges and share promising practices.



San Bernardino Valley College

Learn more about program

INSTITUTIONAL EFFECTIVENESS / RESEARCH

Specifically focused on sharing and working through data-related developments (which are often related to GP areas of institutional capacity-building and improvement).

For more information, contact Jake Kevari
Email: Jacob.Kevari@mvc.edu



The RP Group strengthens the abilities of IE/IR folks to gather, analyze, and act on information in order to strengthen student success.

Regional Rep: Wendy McEwen
wendy.mcewen@rcc.edu

Regional Board Member: Jake Kevari
jacob.kevari@mvc.edu



STUDENT EQUITY PLANNING INSTITUTE (SEPI)

Inland Empire/Desert

SEPI started as a ground-up project by the R9 Student Equity and has now evolved into a 3-year professional learning series that supports community colleges in developing a collective vision and plan of action for racial equity through the adoption, implementation, and evaluation phases. We are collectively making sense of and making change towards racial equity and GP implementation. College teams participate in needs-based institutes, receive personalized coaching, technical assistance and community space coordinated by Dr. Eric Felix, the Community College HigherEd Access Leadership Equity Scholarship (CCHALES) Collaborative, R9 SE Leaders Network and GPRCs.



Special thank you to
Malia Carpenter,



Dr. Kristi Woods, and Dr. Gustavo Ocegüera for their vision and leadership to make SEPI a reality!



2nd Annual SEPI in-person session April 25-26, 2024 in Ontario, CA

Participating colleges:

Barstow, Chaffey, College of the Desert, Copper Mountain, Crafton Hills, Cuesta, Fresno, Mission, Mt. San Jacinto, Moreno Valley, Norco, Palo Verde, Pasadena, Riverside, San Bernardino Valley, Santa Ana, and Victor Valley College

STUDENT EQUITY PLANNING INSTITUTE (SEPI)

Inland Empire/Desert

5 SEPI EQUITY HUBS



Communities of Practice to support the 2022–25 SEPs:

Black Student Success: Expanding support programs and revising policies to better serve Black students.

Latinx Student Equity: Enhancing support programs and policies for Latinx students.

Professional Development: Building educators' skills and awareness around racial equity.

Race-Conscious Inquiry: Identifying barriers to student equity through qualitative and quantitative assessment.

Guided Pathways: Aligning pathways with efforts to improve retention and completion rates for minoritized groups.

Participants can drop by any equity hub during monthly meetings to connect and engage.

PARTICIPANT FAVORITE



SEPI in-person session April 24, 2023 in Ontario, CA

ReCharge Space:

We invited participants to pause, breathe, and recharge amidst their hard work. We created an accessible space for them to use throughout the day: whether during sessions, team discussions, or breaks, they could journal, stretch, or simply be. All SEPI community members were encouraged to visit this space without judgment, the goal was to acknowledge and process feelings as they arise.



Projects are in collaboration with our community partners!



GP/EQUITY COLLEGE PODCAST

Inland Empire/Desert



EPISODE 1: THE COMPLETION INITIATIVE

Prof. Melissa Bader (host) and Dr. Kevin Fleming reflect on Norco College's Completion Initiative (2015) and the "why" that started the conversation around Guided Pathways and Equity at Norco College.

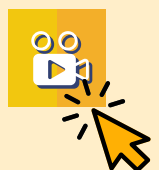


For more information,
contact
Melissa Bader
[Melissa.Bader@
norcocollege.edu](mailto:Melissa.Bader@norcocollege.edu)



EPISODE 2: ENGAGEMENT CENTERS-GETTING STUDENTS ON THE PATH

Reflections from our Engagement Centers and working firsthand with new students. Helping students way find in those first few interactions.



EPISODE 3: AFFINITY GROUPS-STAYING ON THE PATH

Discussions with current students and a former Norco College student who is back as a Success Coach for our Umoja and Women's Lean-In affinity groups. What makes wrap-around services so important for all students.



EPISODE 4: THE STEM CENTER-ENSURING LEARNING

A candid discussion with our 2020-2021 project team leader of the STEM Center, includes recommendations on institutionalizing the transformative work. What will it take to make that the Norco way?



EPISODE 5: DISTRICT GP AT RCCD

Sitting down with the former faculty leads at MVC & RCC to discuss take aways from implementing Guided Pathways and Equity at sister colleges. Includes recommendations for faculty in a multi-college districts.

RADIO SHOW & PODCAST

Inland Empire/Desert



**GROWING
INLAND
ACHIEVEMENT**

*Working Together for Inland
Educational & Economic Success*

Education Insight Production Team (pictured above, left to right): Tyler Veazey, Corona CA (Production Engineer); Lacey Kendall, Banning, CA (Host and Broadcast Consultant); Alyssa Silva, Coachella, CA (Assistant Producer); Jake Poore, Corona, CA (Executive Producer).

Growing Inland Achievement (GIA) is set to relaunch of its award-winning radio show and podcast, Education Insight, in a new and improved format. The new format promises to bring more insights, education topics, and opportunities for listeners to tune in.

**The 30-minute format includes three
weekly broadcast times on KVCR:
Thursdays at 2:00 PM and 6:30 PM
& Saturdays at 4:00 PM**

Education Insight will also be broadcast at various times throughout the week on three more Inland Empire radio stations: KCAA Radio (1050 AM and 106.5 FM), KQLH (92.5 FM) & KFXM (98.3 FM)



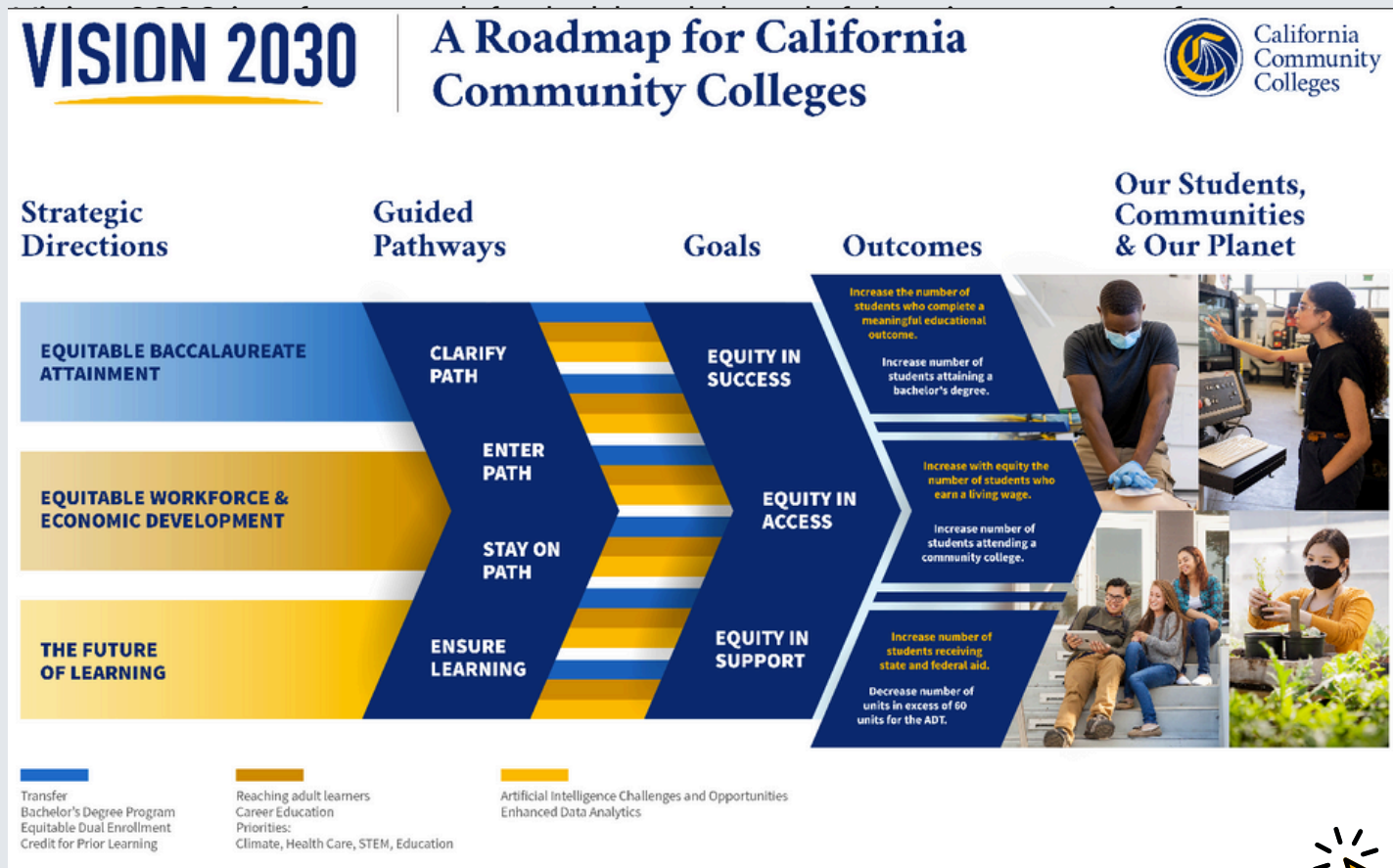
CHANCELLOR DR. SONYA CHRISTIAN



"Sonya Christian, PhD, is a fierce advocate for the life-changing ability of community colleges to reach underserved populations and educate the future workforce. She is committed to advancing work through distributed leadership and collaborative communities of learning, and to promoting the value of equity in student learning, access, success and economic mobility."

 [Read more about Dr. Christian](#)

Vision 2030 is a seven-year action plan for California Community Colleges (CCCCO) that focuses on equity and improving student outcomes.



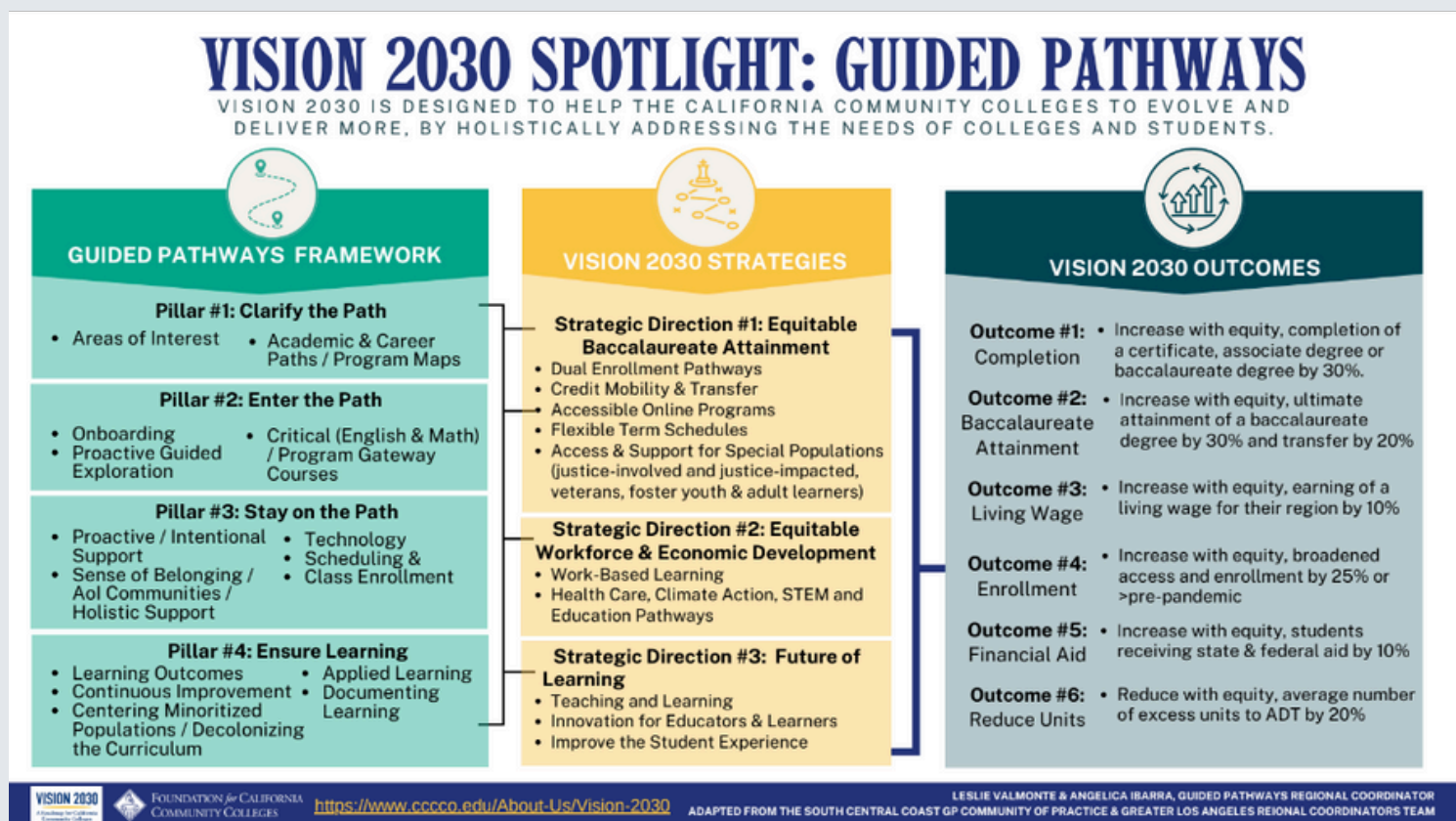
CHANCELLOR'S OFFICE NEWS

System-Wide Resources

Guided Pathways streamline academic journeys, aligning students' goals with clear educational routes, thus bolstering Chancellor's Office Vision 2030 objectives. By providing structured support and personalized guidance, this strategy enhances student success rates and accelerates progress towards meeting ambitious educational benchmarks. Through systematic integration of resources and interventions, guided pathways ensure equitable access and attainment, advancing the Chancellor's vision for a thriving educational landscape by 2030.

thank you!

Adapted from the South Central Coast GP community of practice & Greater Los Angeles Regional Coordinators Team!



Click directly
on links!

Vision 2030 Resources

- [VISION 2030 INTRODUCTION WEBSITE](#)
- [VISION 2030 TOOL KIT](#)

CHANCELLOR'S OFFICE NEWS

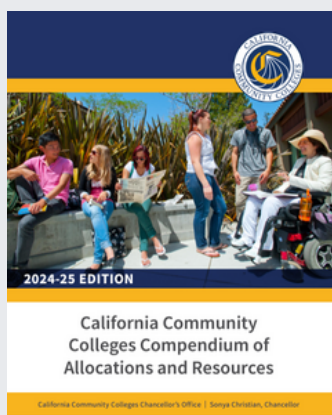
System-Wide Resources



Chancellor's Office
official website

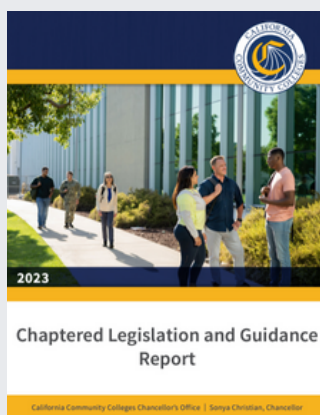
<https://www.cccco.edu>

Discover a wealth of resources and insights on the Chancellor's Office sites, where innovative strategies and transformative practices in higher education come to life.



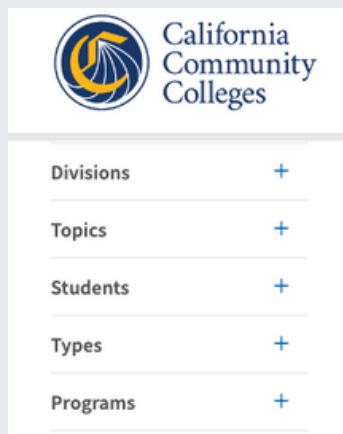
Compendium of Allocation and Resources

Comprehensive
information about
ongoing and new 2024-
2025 funding allocations.



Chaptered Legislation and Guidance Report

Designed to inform
campus leaders of
recently enacted laws
related to the California
Community Colleges.



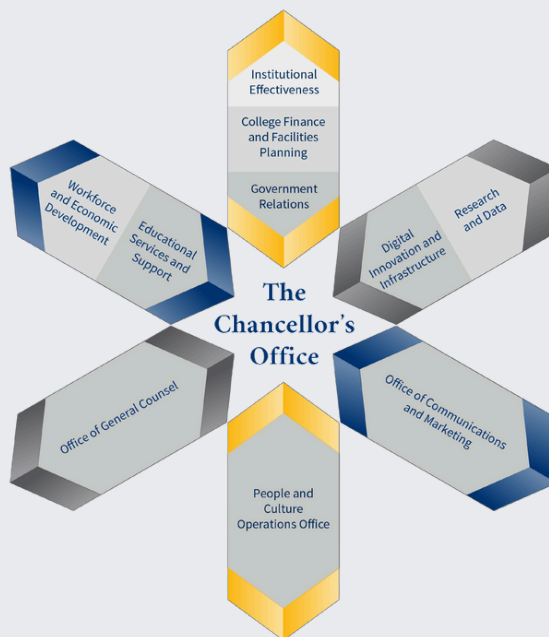
CO Memos Database

Provides access to official
CO documents and offers
key information and
updates on policies and
initiatives.



CO's Divisions

Discover more about the CO's three
divisions focused on transformational
change and the three support units.



2024 Systemwide Webinars

Monthly webinars that cover systemwide
topics -- for all who are affiliated with the
California community colleges.

Oct 2, 2024 09:00 AM

Nov 6, 2024 09:00 AM

Dec 4, 2024 09:00 AM

REGISTER NOW



NEW TOOLS: GP PLAYBOOK

The Guided Pathways Playbook provides actionable, equity-focused strategies for college professionals to implement Guided Pathways and meet the goals of Vision for Success, the Governor's Roadmap, and Vision 2030. It includes resources from the 41 colleges in the California Guided Pathways project.

INSTITUTE INSIGHTS		WEBINAR INSIGHTS	
	Creating Guided Pathways to Prosperity and Equity	Build a Sense of Belonging and Connection	
	Connecting Students to Their Program of Study and the Greater Campus Community	Designing Student Success Teams to Provide a Student-Centered Ecosystem	
	Developing a Holistic and Student-Centered Ecosystem	Create Conditions of Success for Students of Color	
	Teaching and Learning for Equitable Student Outcomes	Create a Coalition of Support to Lead Large-Scale Change	
	Engaging the Entire Campus in GP Implementation	Design an Online Learning Experience for Students Success	
	Creating Sustainability and Charting the Path Forward	Redesigning the Student Experience at Scale	
		Growing Enrollment by Better Serving Skills Builders	
		Designing Inclusive Pathways for Adult Learners	

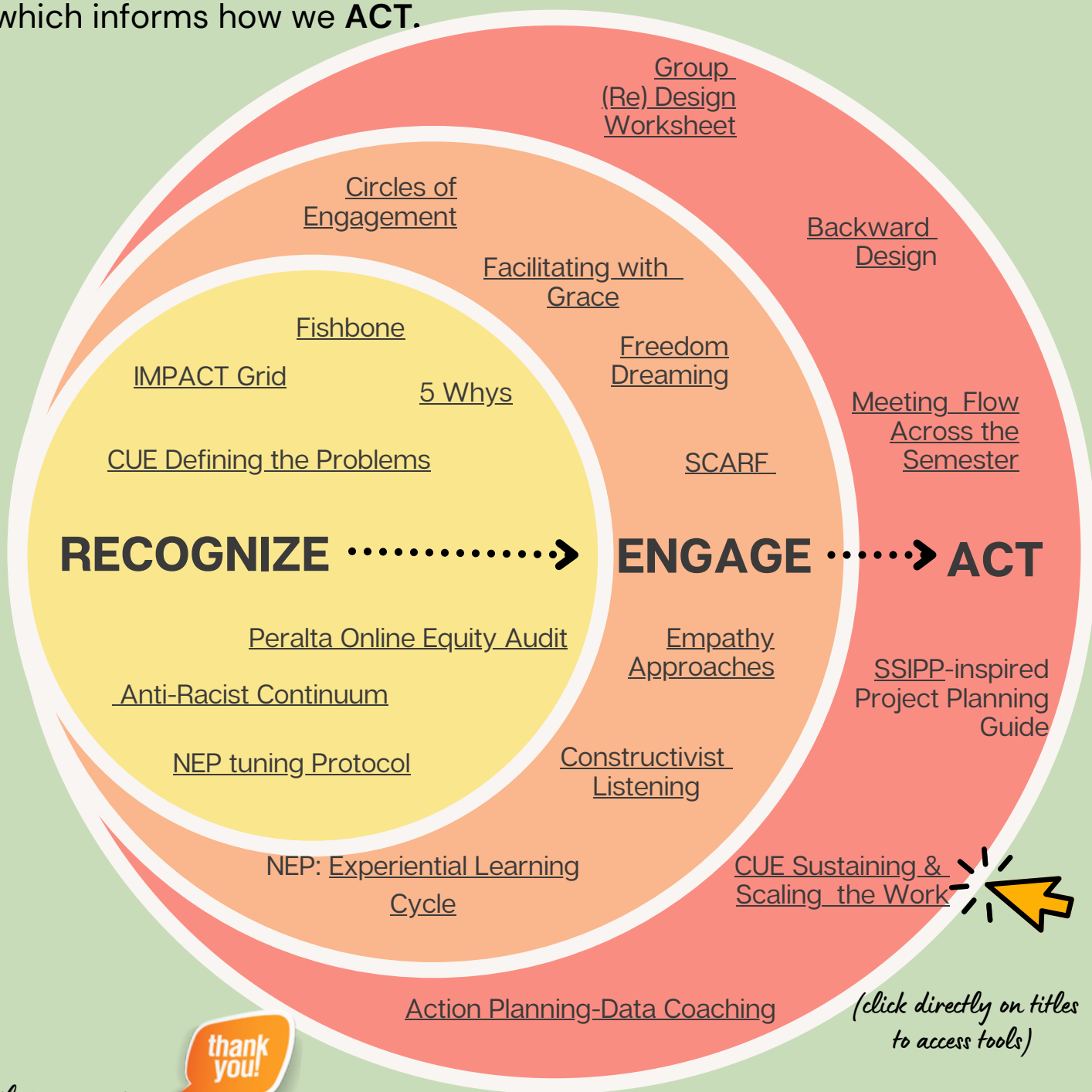
(click directly on titles to access tools)



TOOLS: EQUITY

Effective change management tools curated by GP Regional Coordinators throughout California. Utilizing the Leading for Equity Equity Leadership Stance which moves from the "inside-out" instead of the traditional "top-down" approach.

How we SEE (updated to **RECOGNIZE**) informs how we **ENGAGE**, which informs how we **ACT**.

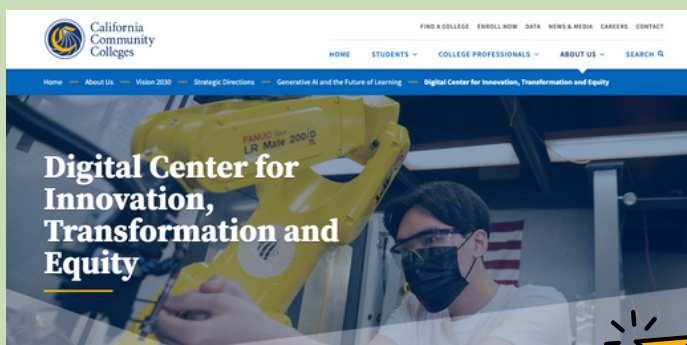


With Appreciation:

Credit to Dr. Sunny Greene, Guided Pathways
Regional Coordinator in Northern California

TOOLS: ARTIFICIAL INTELLIGENCE

DIGITAL CENTER FOR INNOVATION, TRANSFORMATION AND EQUITY



The newly developed Digital Center for Innovation, Transformation, and Equity is part of the California Community Colleges system, focused on leveraging digital technologies to drive innovation and equity in education. It aims to enhance learning experiences and ensure equitable access for all students, supporting the Vision 2030 initiative to reshape higher education for the digital age.



VISION 2030: GENERATIVE AI IN HIGHER EDUCATION SERIES



09/25/23



11/07/23



02/27/24



05/07/24

*(click directly on dates
to access recording)*



CCCCO COURSE: EMBRACING AI REVOLUTION

This free course introduces participants to essential concepts and applications of artificial intelligence, covering topics like machine learning, natural language processing, and ethics. Through interactive lessons and real-world examples, learners will explore how AI is transforming industries and discover practical ways to integrate AI tools into their work and daily lives.

TOOLS: LISTSERVS



**GET UP-TO-DATE
INFORMATION ON RESOURCES,
EVENTS, AND OPPORTUNITIES,
AND CHAT/ASK QUESTIONS
WITH FOLKS AT COMMUNITY
COLLEGES THROUGHOUT
CALIFORNIA.**

IE/D REGIONAL GUIDED PATHWAYS LISTSERV

Created to keep you connected and informed about events, resources, and updates related to Holistic Student Supports, Equity and Guided Pathways efforts in the Inland Empire/Desert.



*To sign up, e-mail
Angelica Ibarra*

INSTITUTIONAL EFFECTIVENESS PARTNERSHIP INITIATIVE (IEPI)

[Click here to join](#)

Another CCCCO listserv, specifically focused on sharing IEPI-related professional development (which are often related to GP areas of institutional capacity-building/improvement)

SLO SYMPOSIUM LISTSERV

[Click here to join](#)

Community-led listserv that tackles the "Ensure Learning" pillar of Guided Pathways. Great place to ask questions and/or learn of regular discussion spaces to connect about improving teaching and learning.

STUDENT EQUITY & ACHIEVEMENT (SEA) PROGRAM LISTSERV

[Click here to join](#)

The CCCCO's official communication channel with the field regarding SEA Program-related topics and events. Great listserv to learn of upcoming PD opportunities related to equity and student success.

OFFICIAL CCCCO GUIDED PATHWAYS LISTSERV

[Click here to join](#)

The CCCCO's official communication channel with the field regarding Guided Pathways-related topics and events (e.g., GP reporting, timelines/budgets, PD opportunities). Highly suggest enrolling if you are a college GP lead.

TOOLS: CANVAS

ALL COMMUNITY COLLEGE EMPLOYEES CAN
RECEIVE ACCESS TO CANVAS.

GUIDED PATHWAYS RESOURCE SITE

[Click Here to self-enroll](#)

- LOG IN WITH YOUR CANVAS EMAIL ADDRESS AND PASSWORD!
- CLICK "ENROLL IN THIS COURSE"
- NAVIGATE RESOURCES USING THE "MODULES" BUTTON.

With Appreciation:

Guided Pathways Resource Site
Curated by the Greater North GP Regional
Coordinator Team!



ASCCC ONLINE HANDBOOK FOR GP

[Click Here to self-enroll](#)

- LOG IN WITH YOUR CANVAS EMAIL ADDRESS AND PASSWORD!
- CLICK "ENROLL IN THIS COURSE"
- NAVIGATE RESOURCES USING THE "HOME" PAGE LINKS.



If you do not yet have a Canvas account, you can **request a Canvas account at your institution** or **contact our amazing colleague Dr. Sunny Greene at sgreene@foundationccc.org** to have an account made for you.



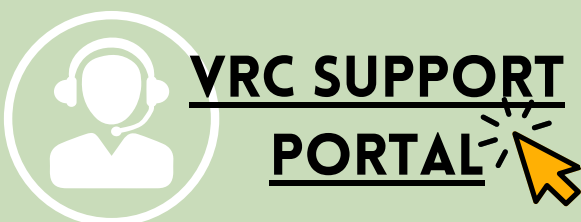
TOOLS: VISION RESOURCE CENTER

ALL COMMUNITY COLLEGE EMPLOYEES CAN RECEIVE ACCESS TO THE CCC VISION RESOURCE CENTER.



- AFTER LOG-IN, CLICK "SYSTEM-WIDE INFORMATION", THEN "GUIDED PATHWAYS" OR SEARCH FOR OTHER ONLINE COMMUNITIES
- UNDER THE "LEARN" HEADER, FIND INFORMATION ON IMPORTANT GP TOPICS
- UNDER THE "CONNECT" HEADER, CLICK "CCC | GUIDED PATHWAYS" TO ACCESS COMMUNITY FORUMS

If you have any trouble creating an account and logging in, contact the VRC here:



GUIDED PATHWAYS LIBRARY OF RESOURCES

[Click Here to Log In](#)

This Guided Pathways Library of Resources is a living and evolving repository of curated resources to support CCCs with your GP inquiry, design, and implementation.



TOOLS: READINGS

ESSENTIAL WEBSITES



- [California Community Colleges Chancellor's Office Guided Pathways Site](#)
- [California Community Colleges – Vision for Success](#)
- [American Association of Community Colleges \(AACC\) Guided Pathways Resource Center](#)
- [Community College Research Center \(CCRC\) Guided Pathways Publications & Resources](#)
- [Foundation for California Community Colleges – Guided Pathways Success Center Site](#)
- [Continuous Learning Institute__GP Resources](#)

GOOD READS

- **BOOK:** [Redesigning America's Community Colleges: A Clearer Path to Student Success](#)
 - **BOOK SUMMARY:** [Redesigning Community Colleges for Student Success: Overview of the Guided Pathways Approach](#)
- **ARTICLE:** [What Excellent Community Colleges Do: Preparing All Students for Success](#)
- **ARTICLE:** [From Equity Talk to Equity Walk: Expanding Practitioner Knowledge for Racial Justice in Higher Education](#)
- **ARTICLE:** [We Want to Do More Than Survive: Abolitionist Teaching and the Pursuit of Educational Freedom](#)





INLAND EMPIRE/DESERT GUIDED PATHWAYS RESOURCE GUIDE

<https://tinyurl.com/IED-GPResource-Guide>

CONTACT YOUR INLAND EMPIRE/DESERT GUIDED PATHWAYS REGIONAL COORDINATOR

Angelica Ibarra

aibarra@foundationccc.org

*Proudly serving College of the Desert, Copper Mountain College, Crafton Hills College,
Mt. San Jacinto College, Palo Verde College and San Bernardino Valley College*

Leslie Valmonte

lvalmonte@foundationccc.org

*Proudly serving Barstow College, Chaffey College, Moreno Valley College,
Norco College, Riverside City College, and Victor Valley College*

Can you find your college?



Various IE/D community
colleges are pictured
throughout the guidebook!